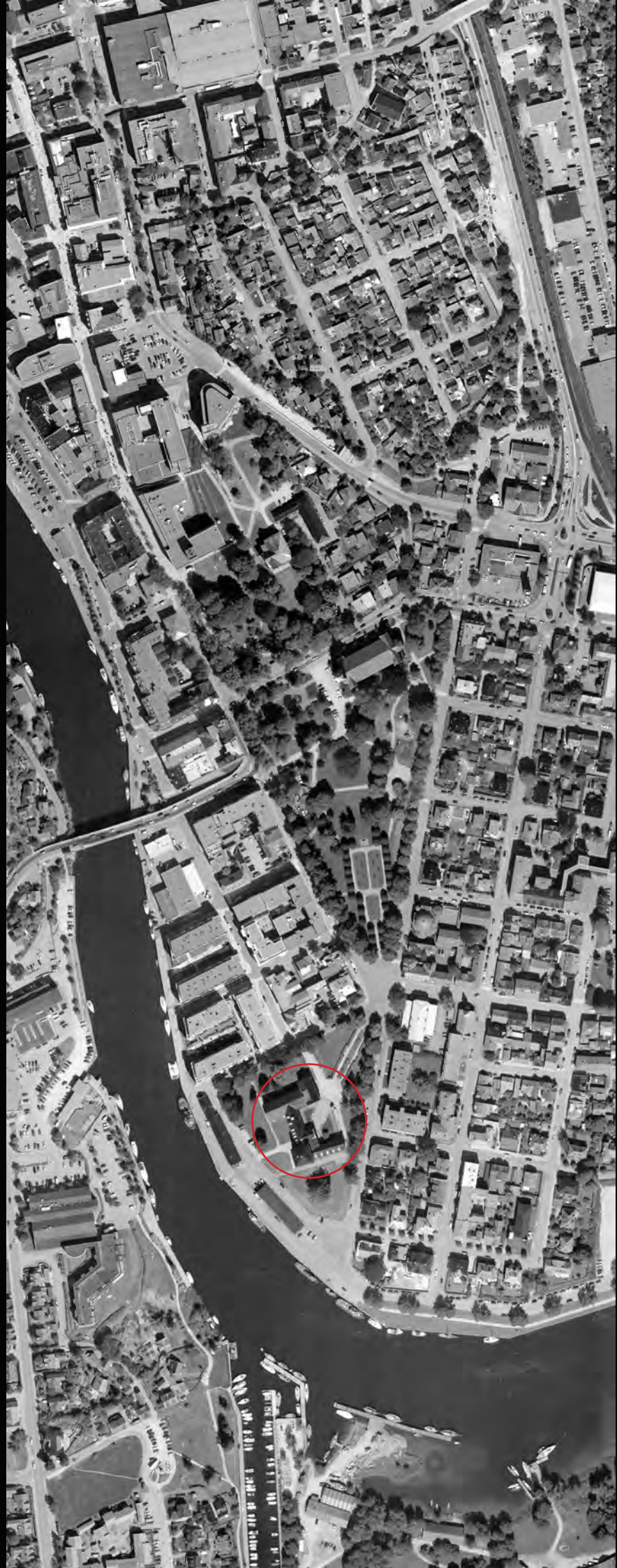


LIBRARY EXTENDED
FINAL PRESENTATION
HARIS RAMIC, DIPLOMA AUTUMN 2015







Exterior





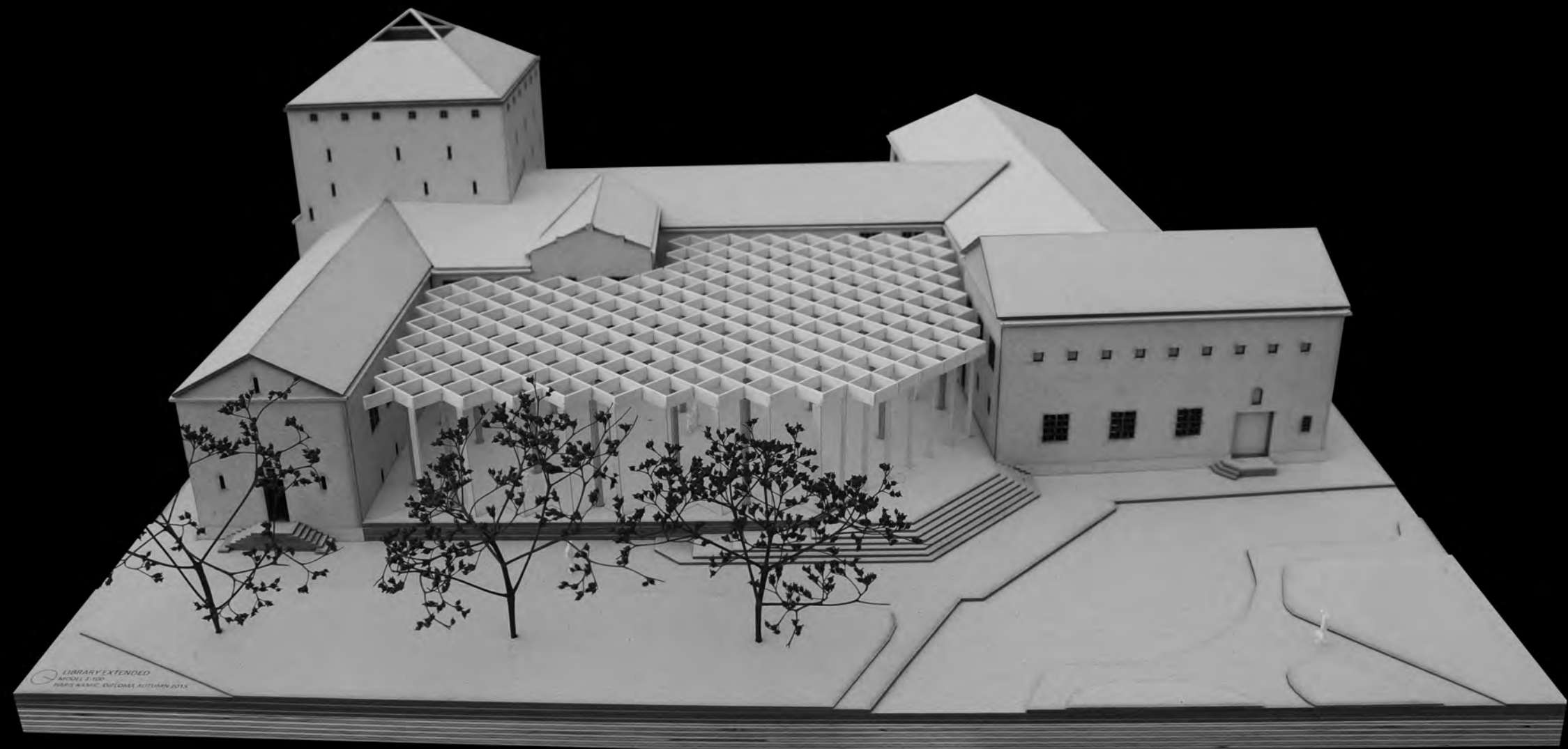
Interior, library spaces

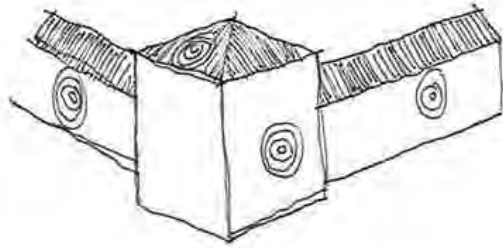


Interior, book tower

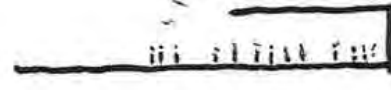


Context

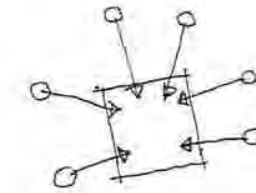




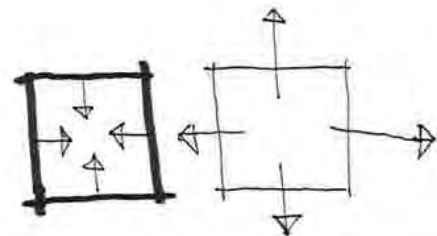
Minimum physical impact on existing mass



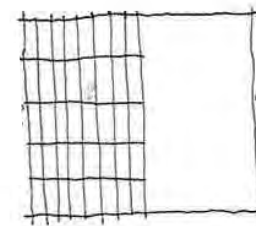
Open and inviting library. A continuation of the city floor



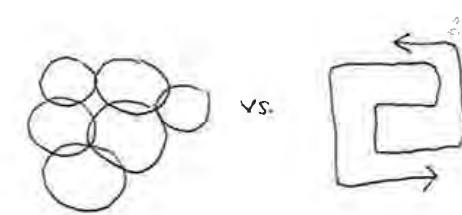
Adding space that the existing easily can be connected to



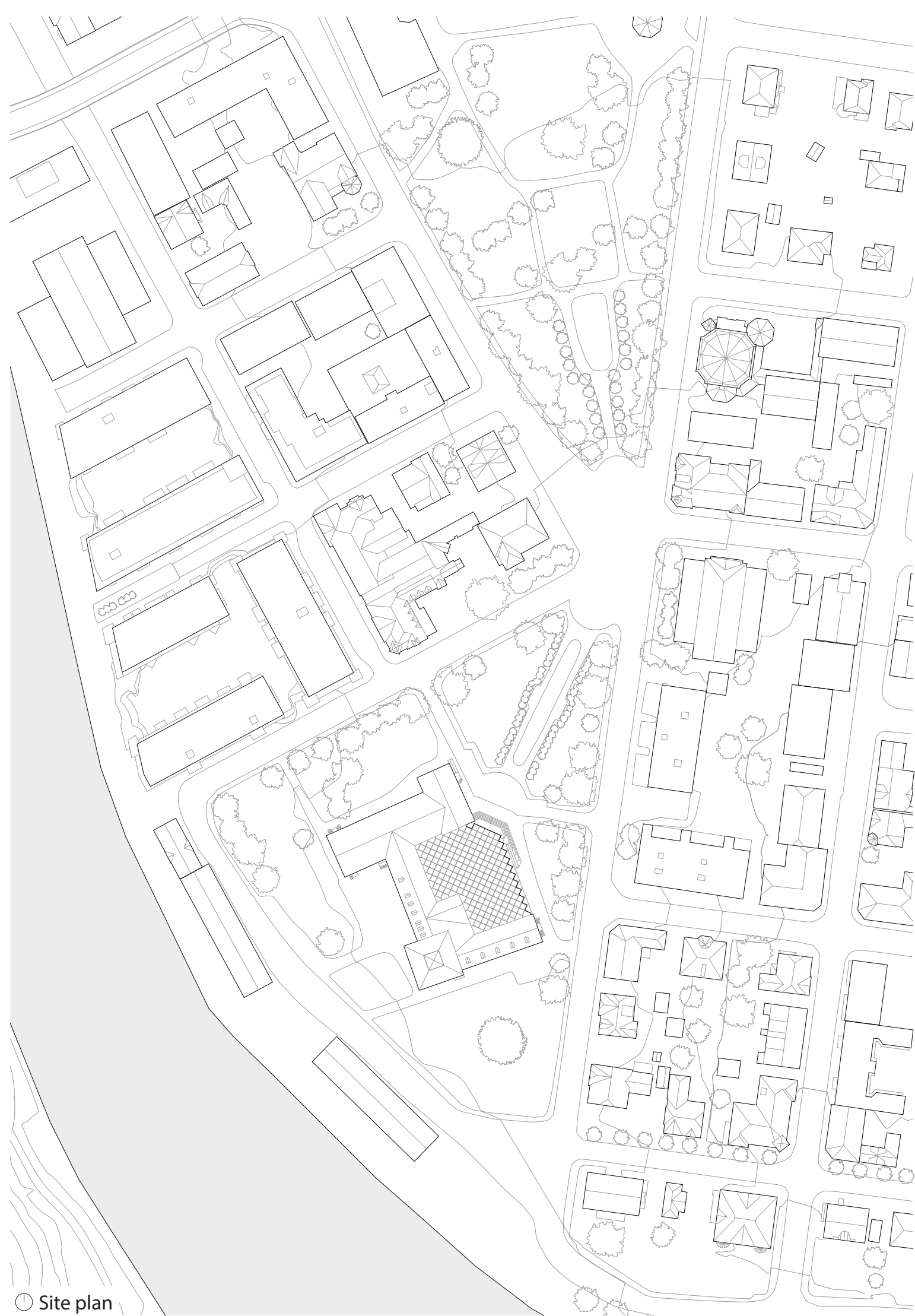
Introvert space vs. extrovert space



Contrasting space in terms of use and structure.

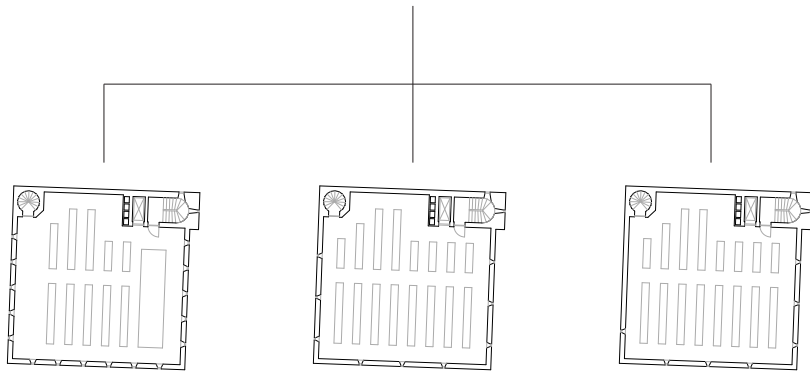


Zones vs. circulation patterns

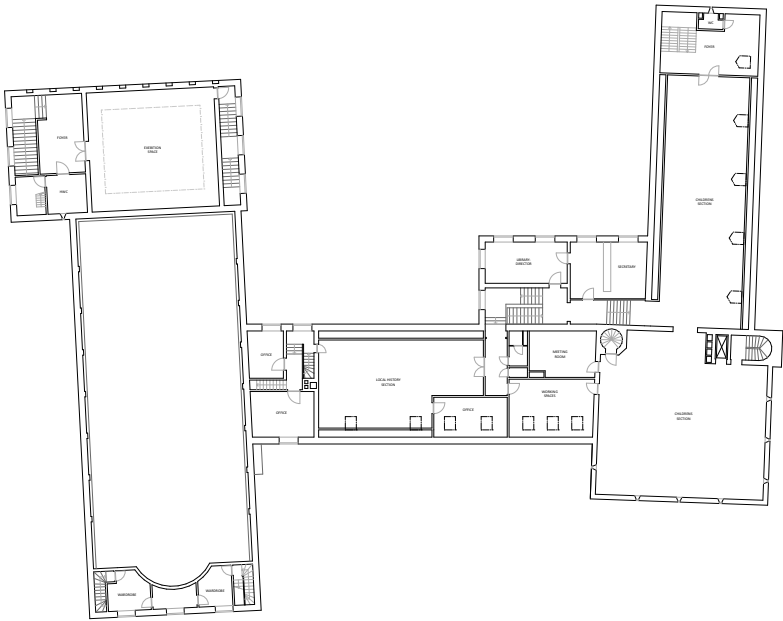


⌚ Site plan

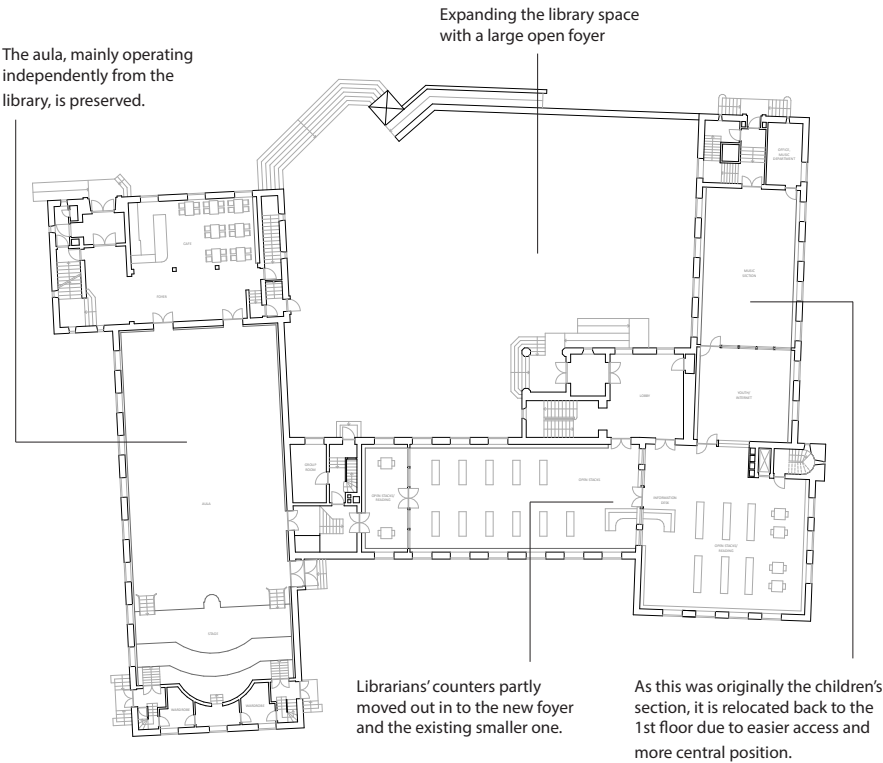
Quiet reading spaces mainly lit by a skylight due to a large opening in each floor.



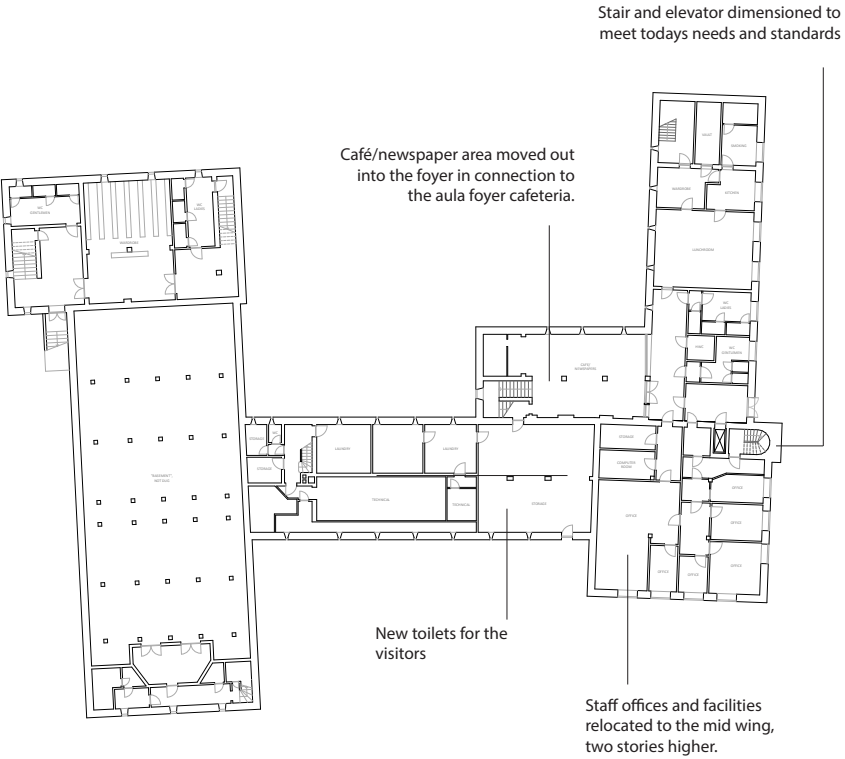
3rd, 4th & 5th floor



2nd floor,

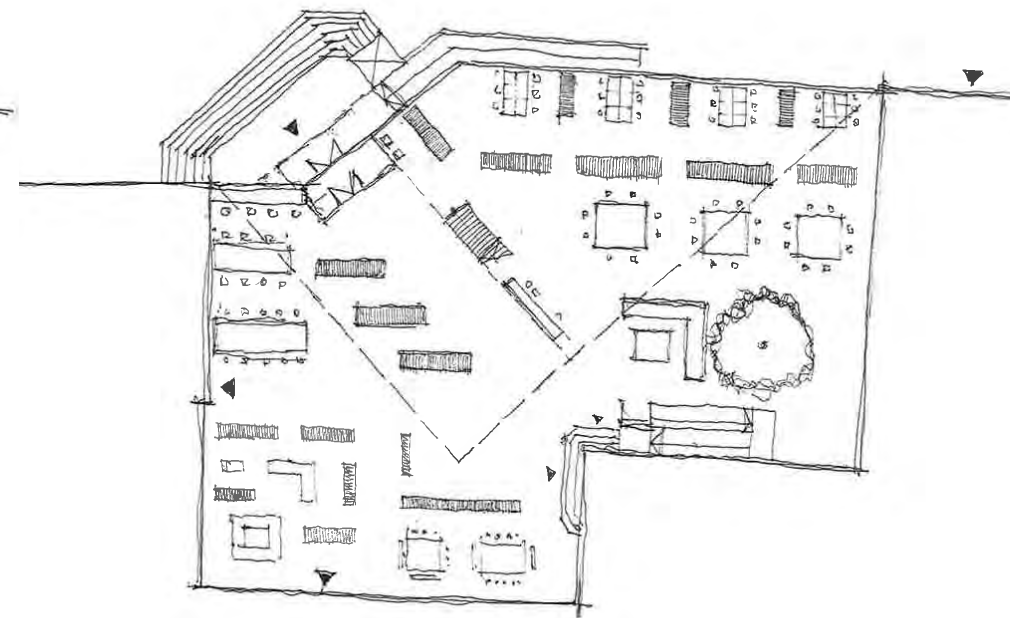
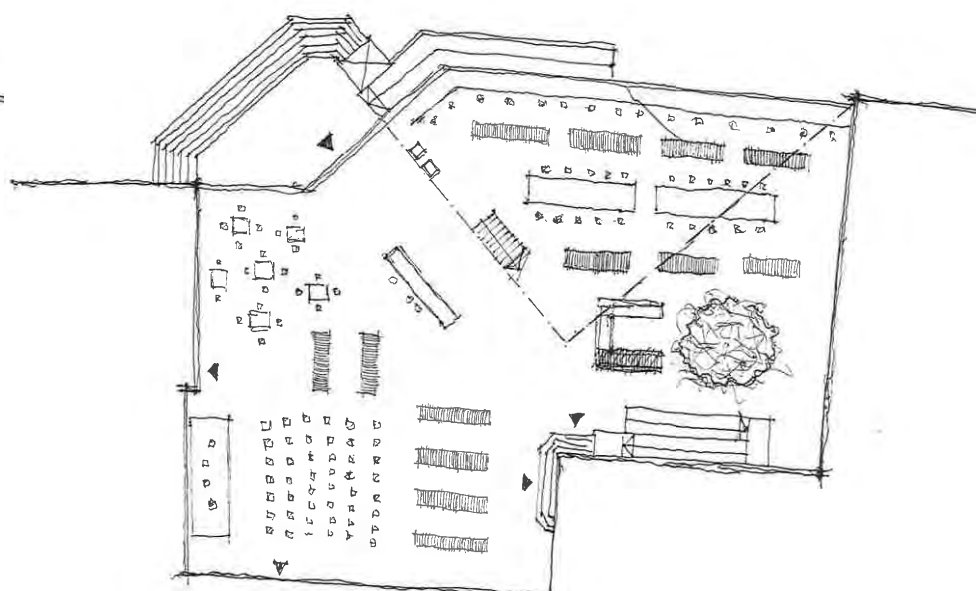
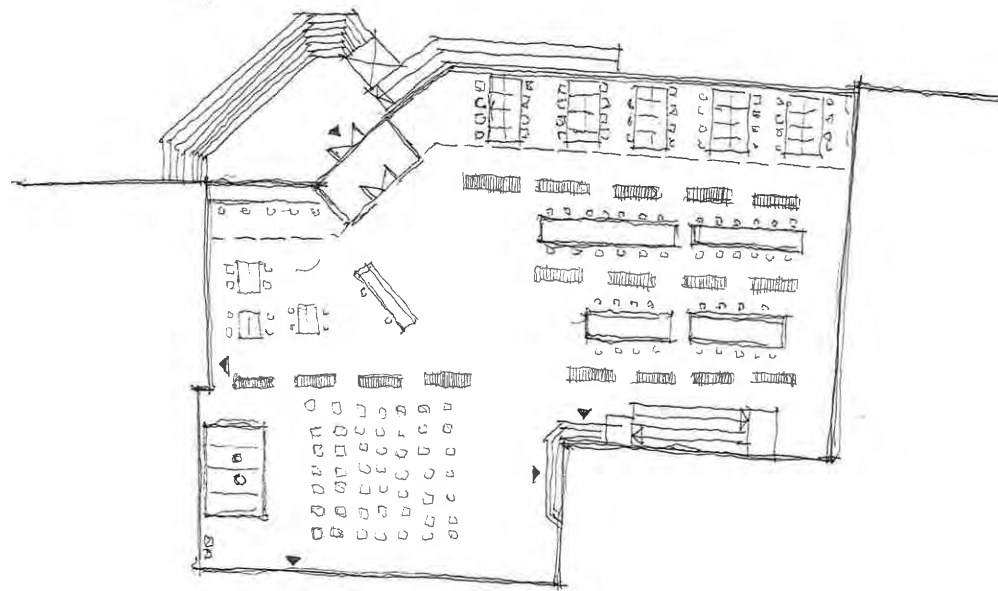
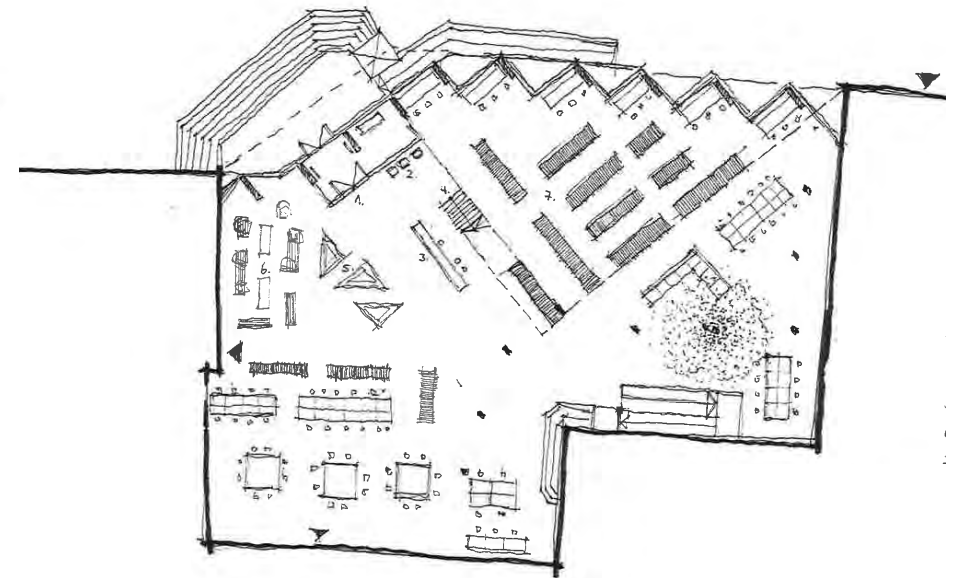
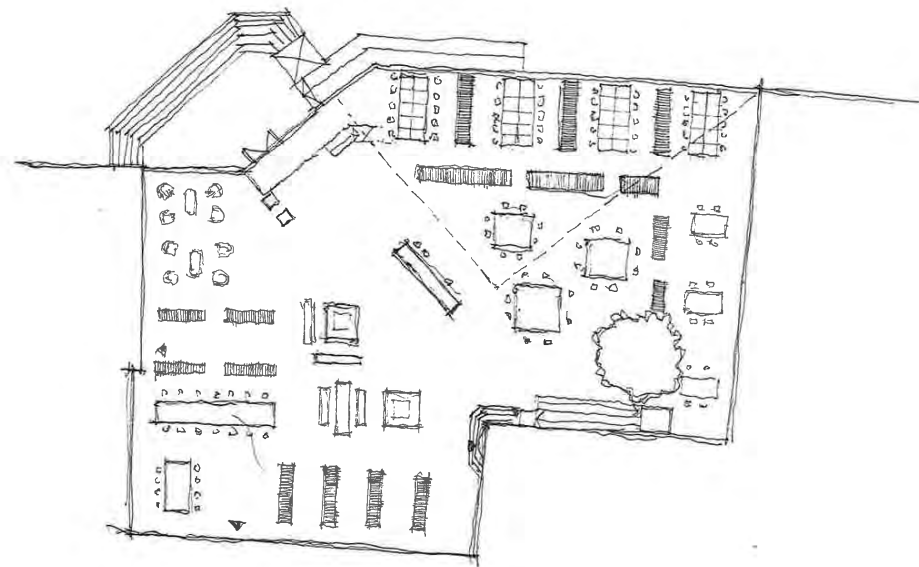
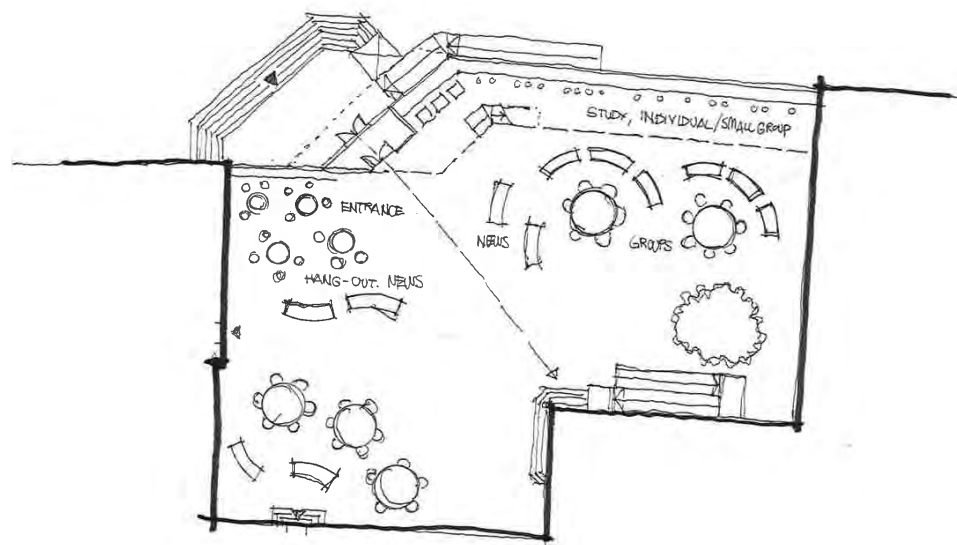


1st floor,

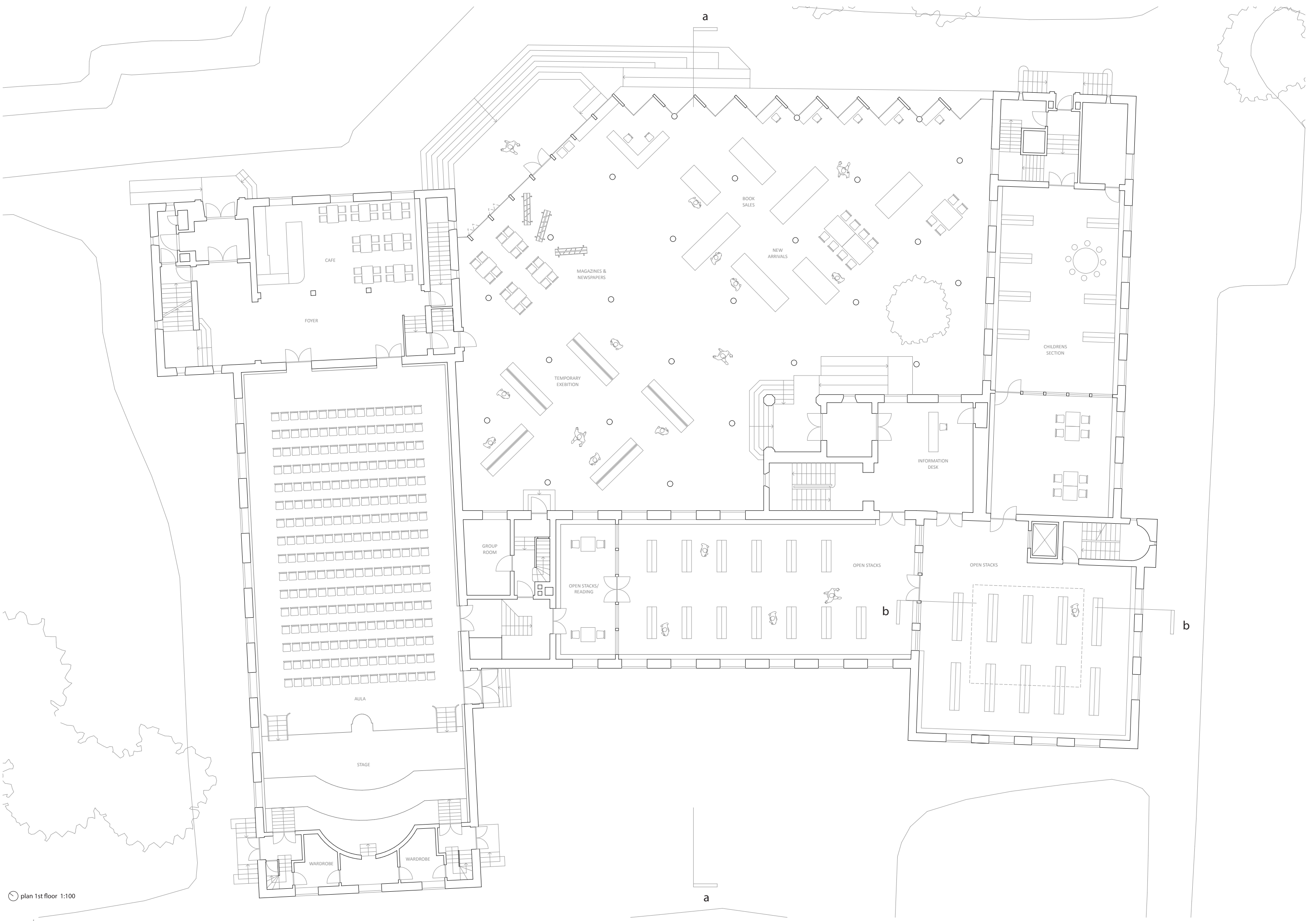


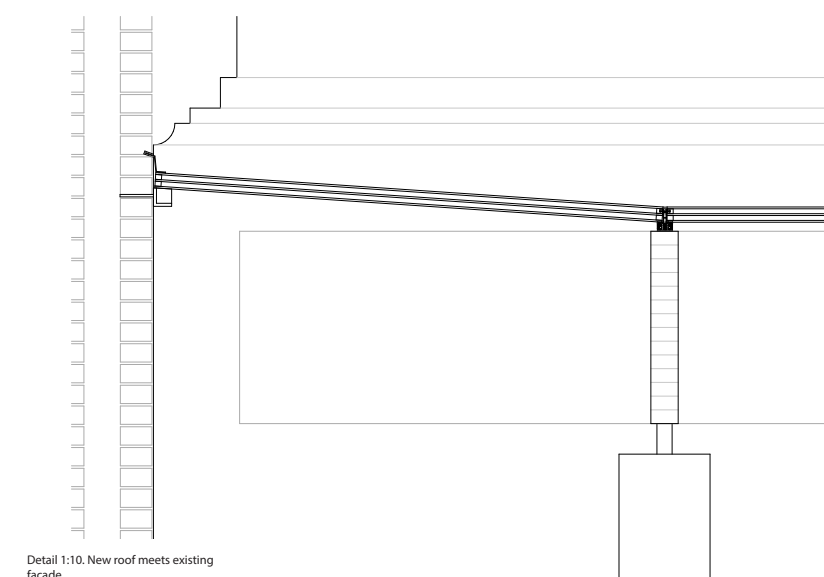
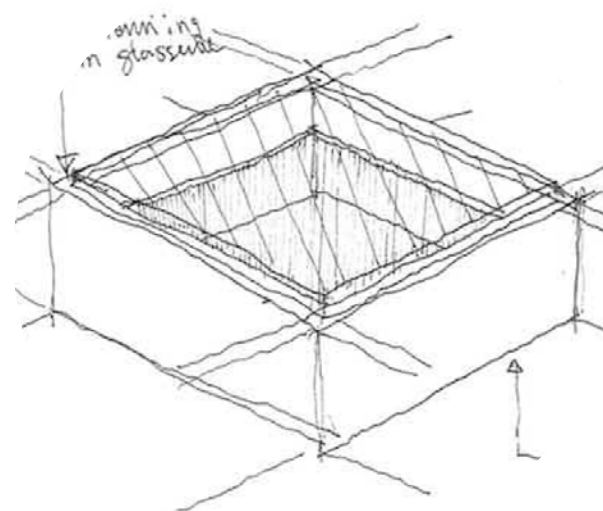
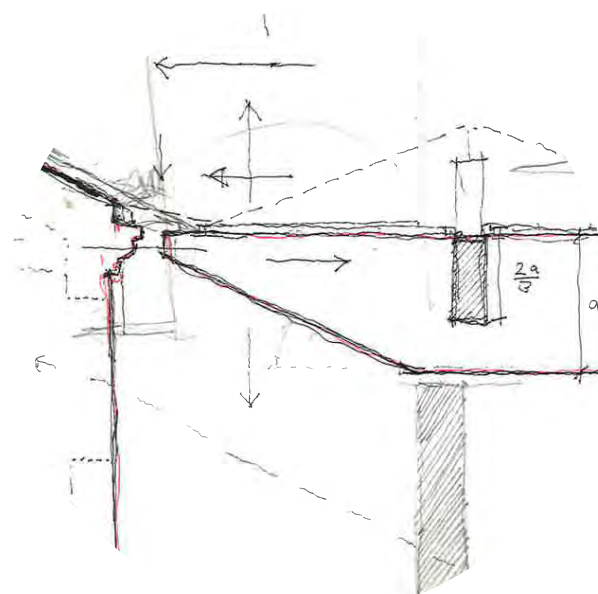
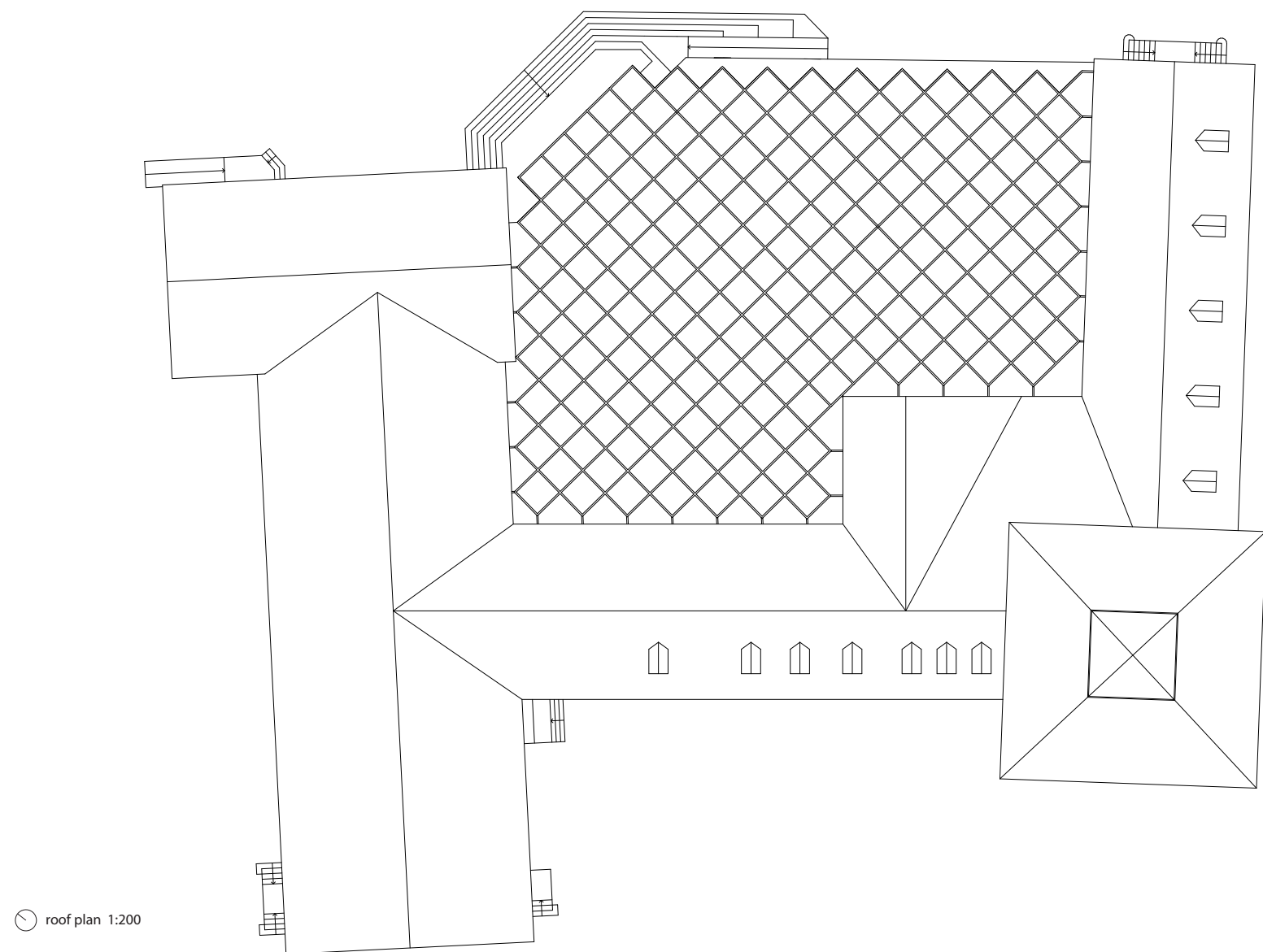
Ground level,



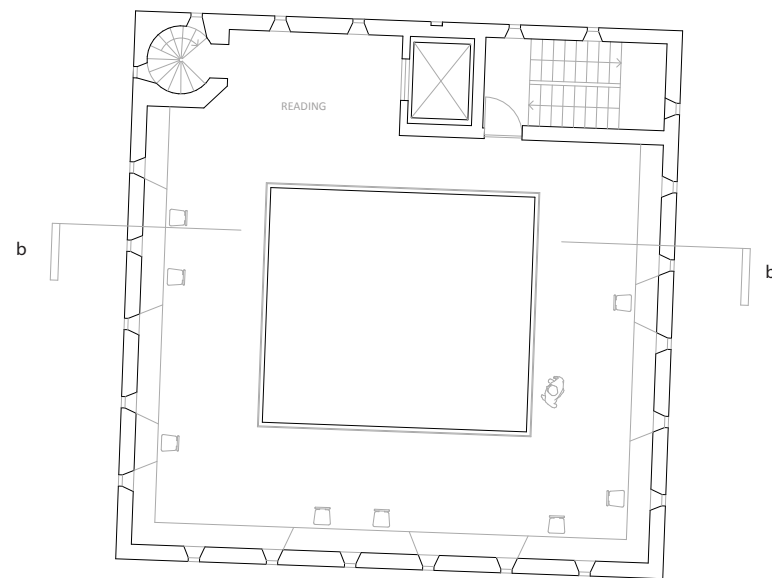
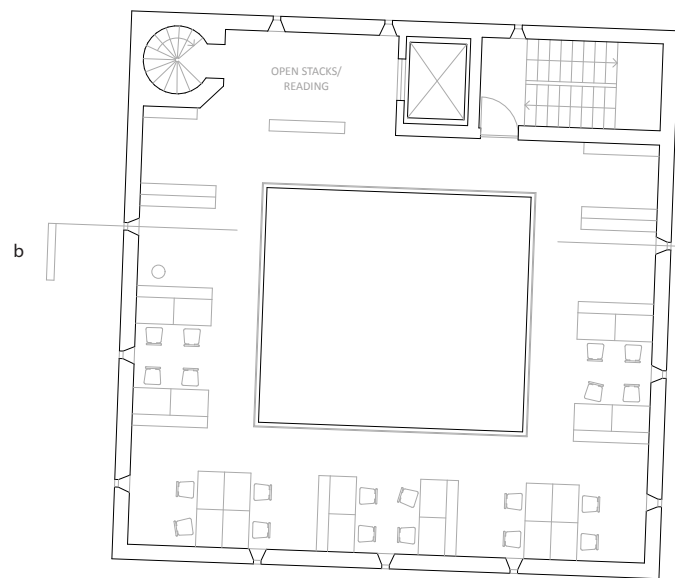
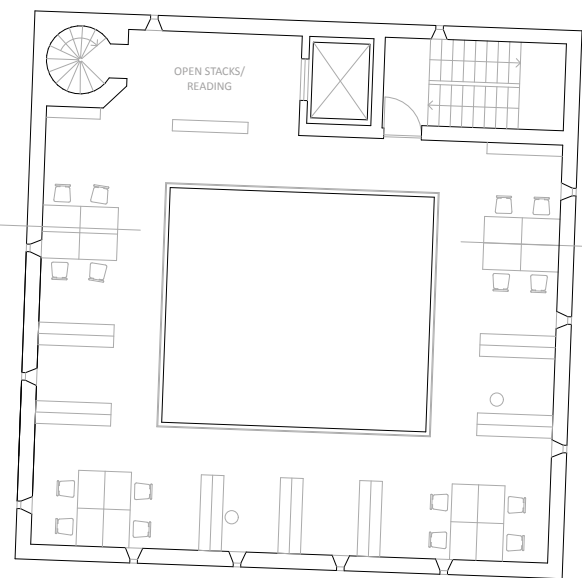


process/sketches, flexible plan, 1st floor

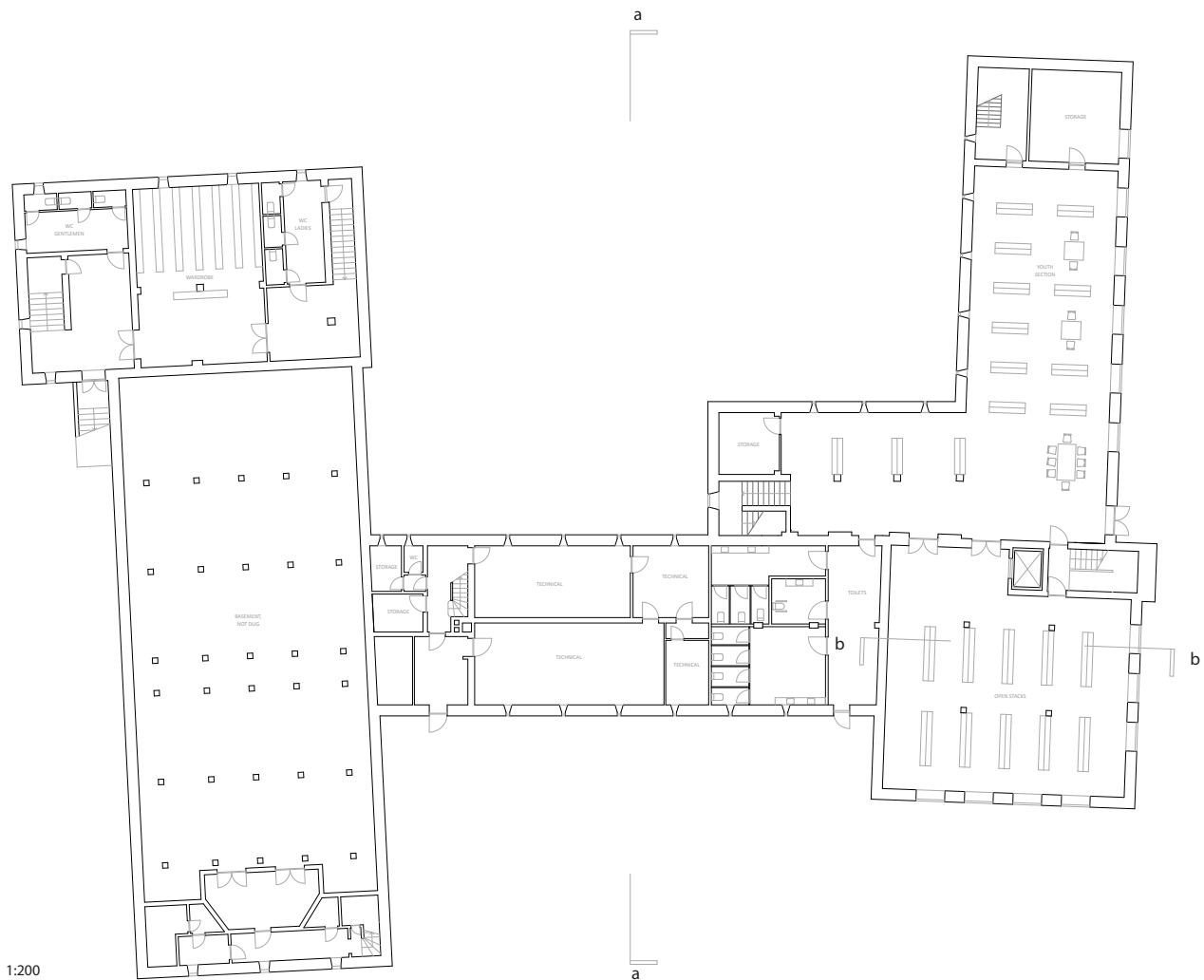




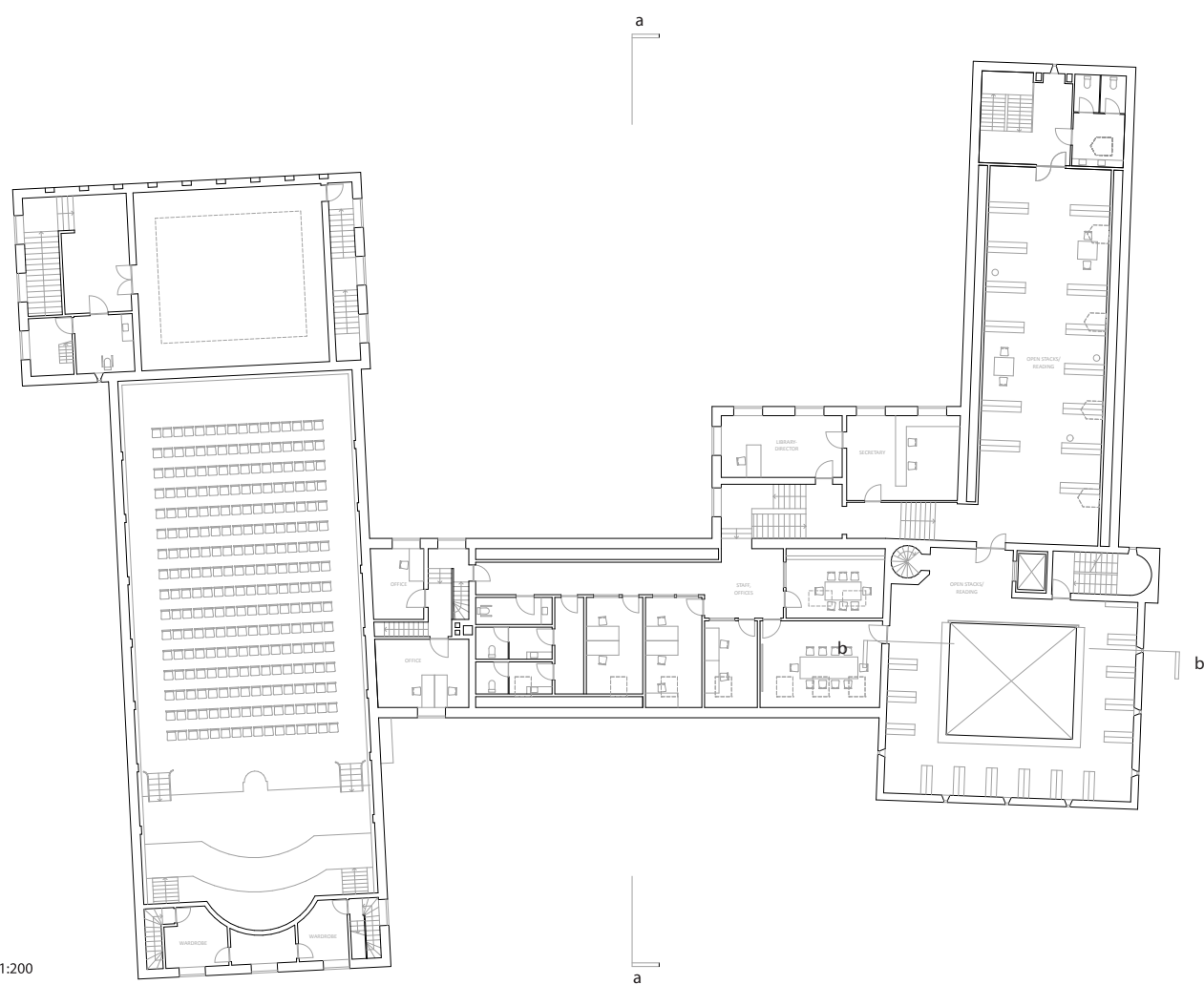




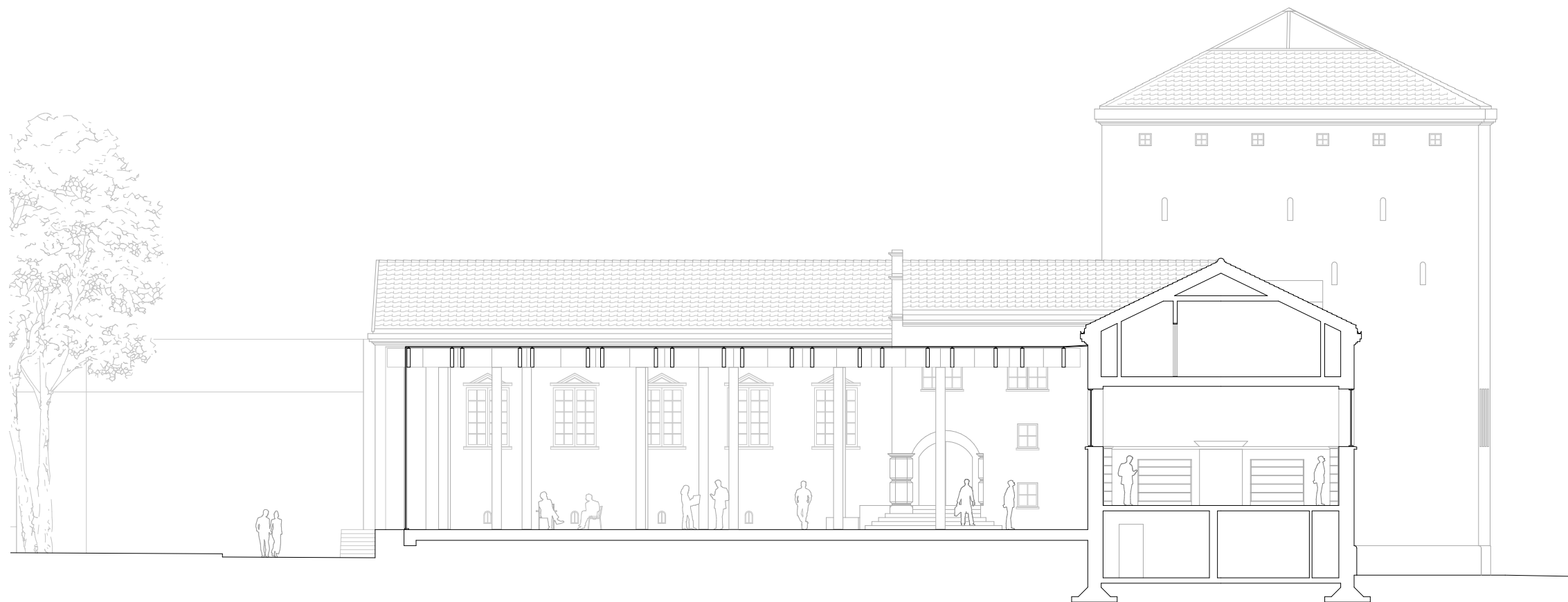
plan 3rd, 4th & 5th floor 1:100



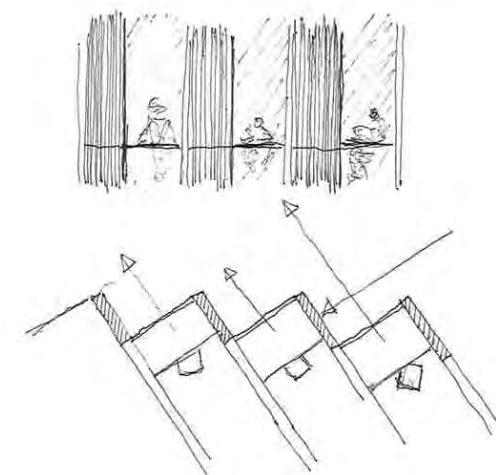
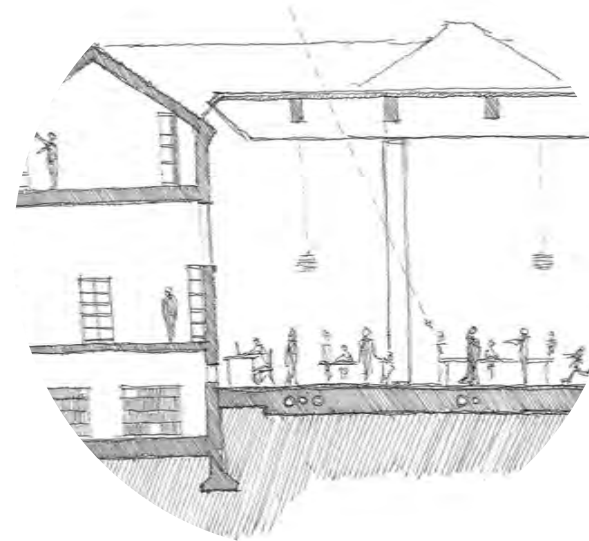
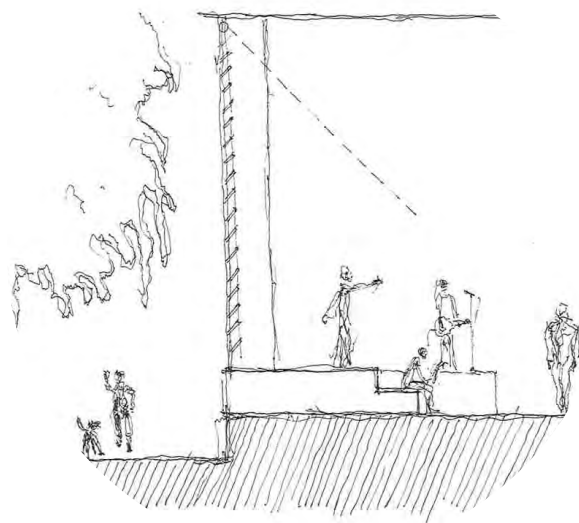
plan ground floor 1:200



plan 2nd floor 1:200



section aa



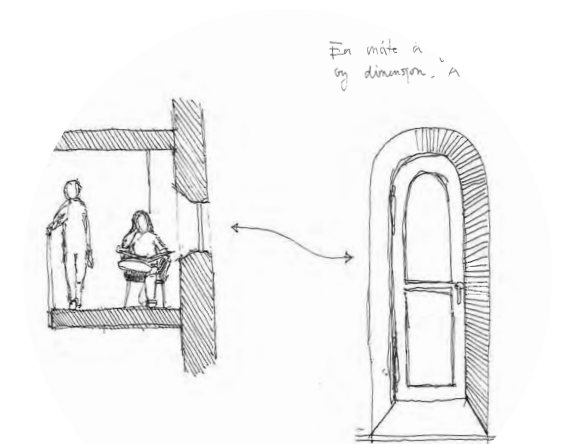
process, sketches



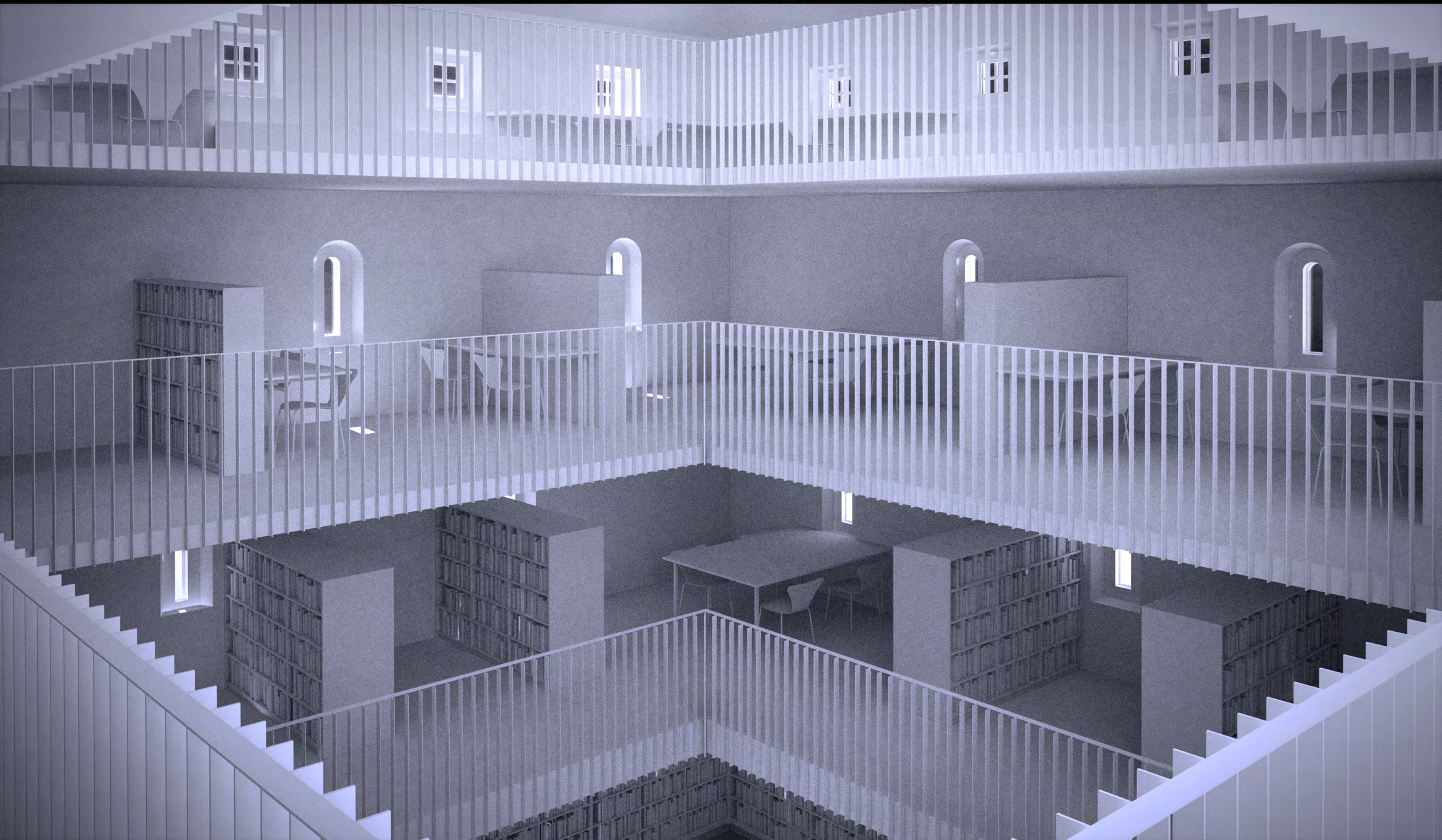
section bb

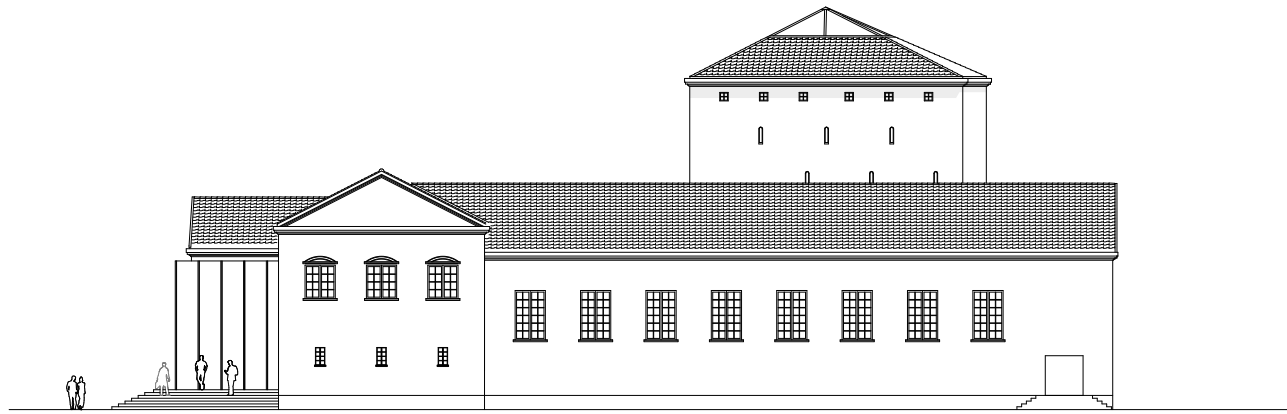


existing

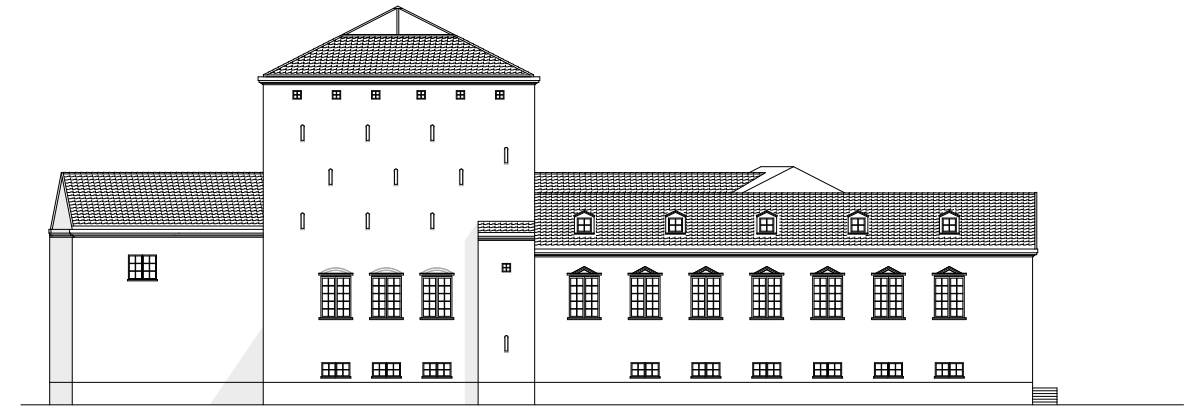


process, sketch

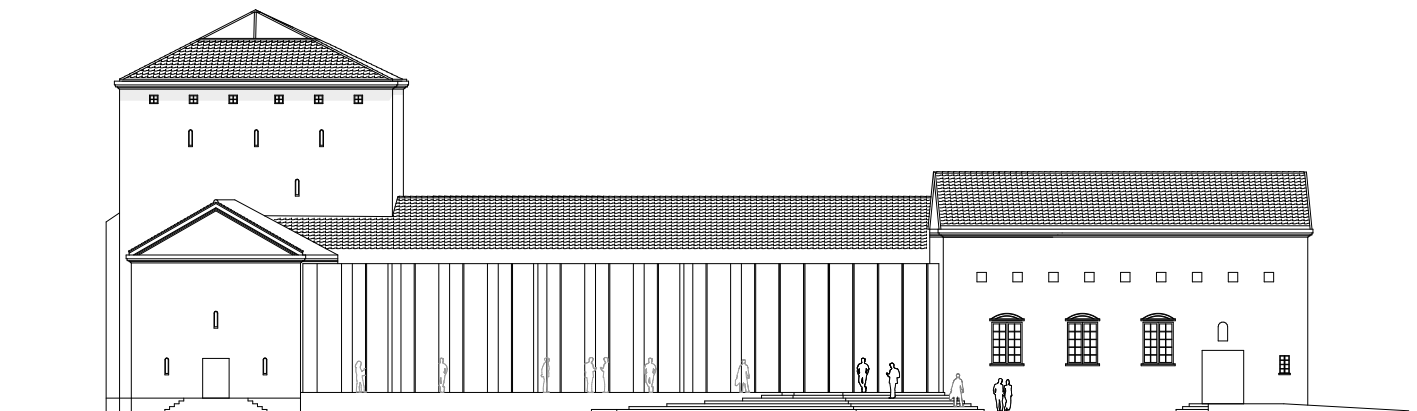




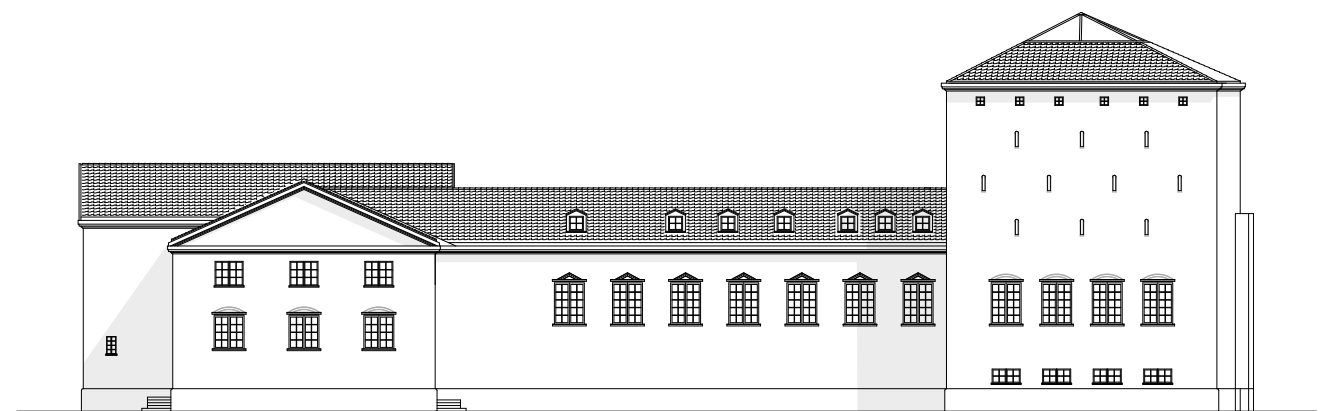
facade north



facade south



facade east



facade west

