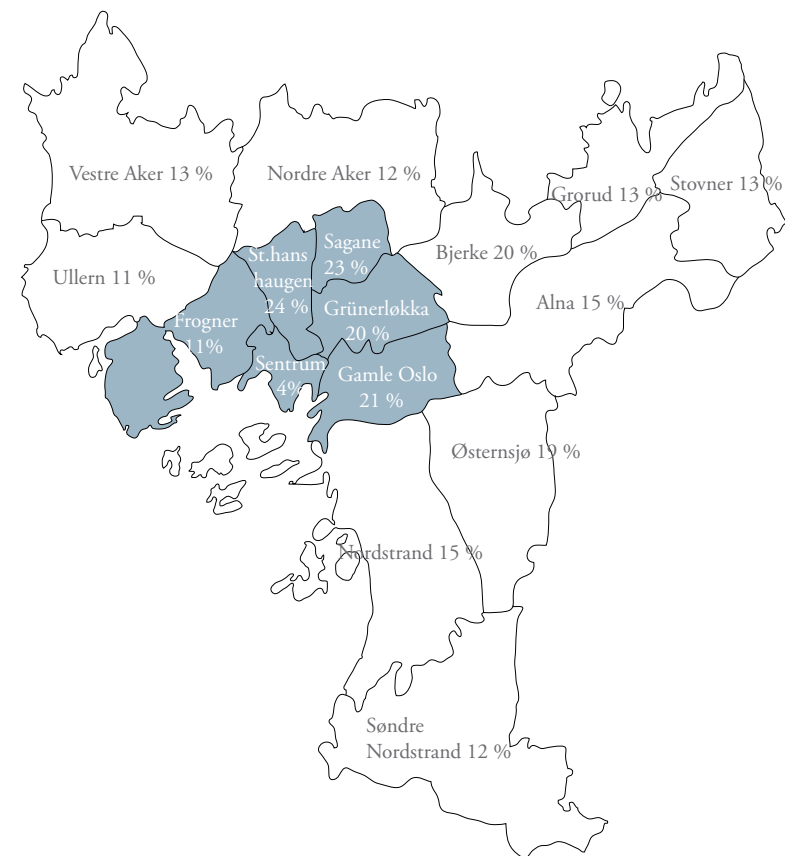
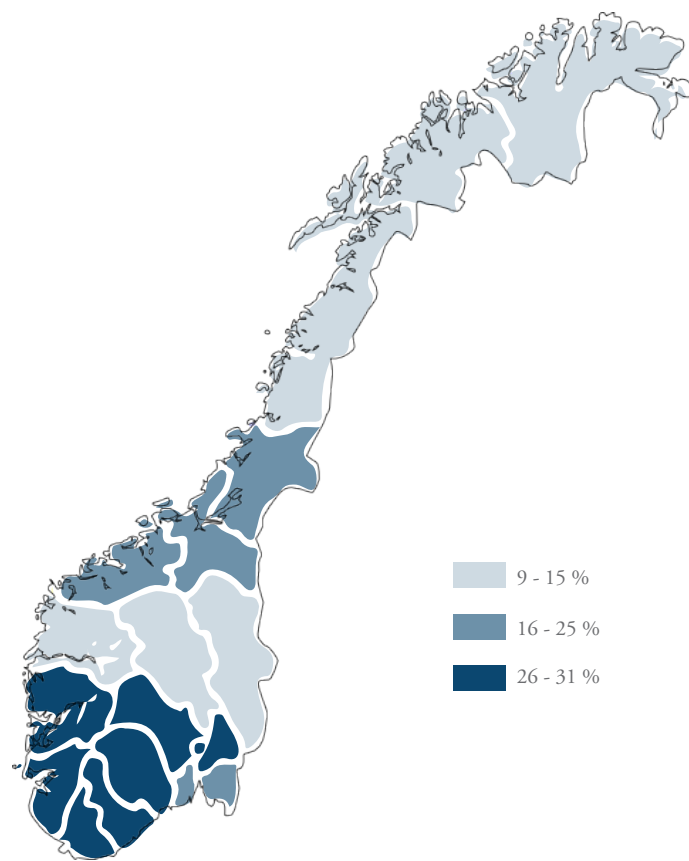


UNUSED SPACE //

- Residencies for artists

*ELINE EGELAND DIPLOMA SPRING
2016*





Typical infill



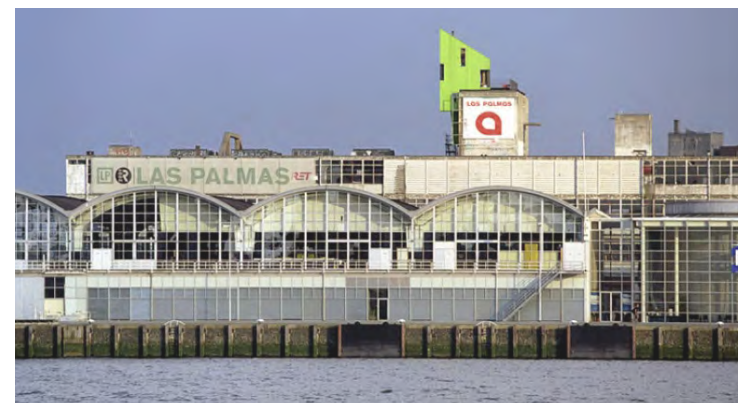
Onfill



In between existing buildings



BRICK HOUSE
 Architect: Caruso St John Architects
 Year of construction: 2001-2005
 Location: London, England

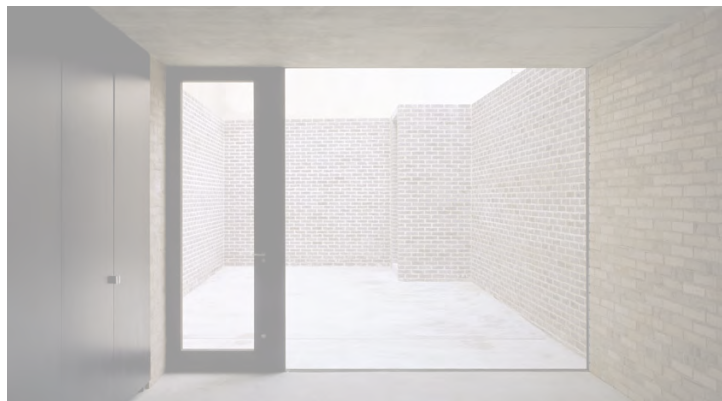


LAS PALMAS PARASITE
 Architect: Korteknie Stuhlmacher Architecten
 Year of construction: 2001
 Location: Rotterdam, Netherlands

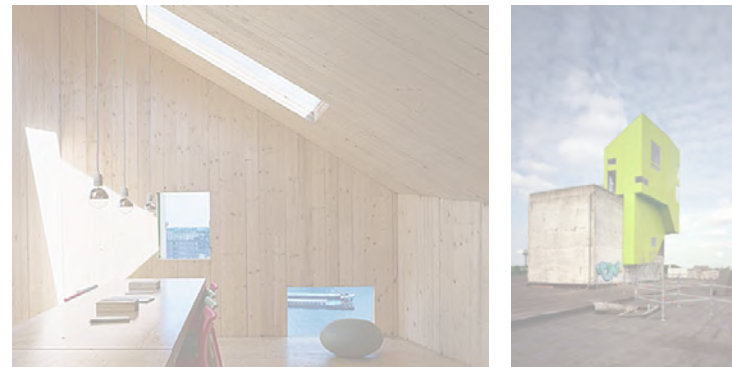


HOUSE FOR TREES
 Architect: Vo Trong Nghia, Masaaki Iwamoto, Kosuke Nishijima
 Year of construction: 2014
 Location: Tan Binh District, Ho Chi Minh City, Vietnam

INFILL

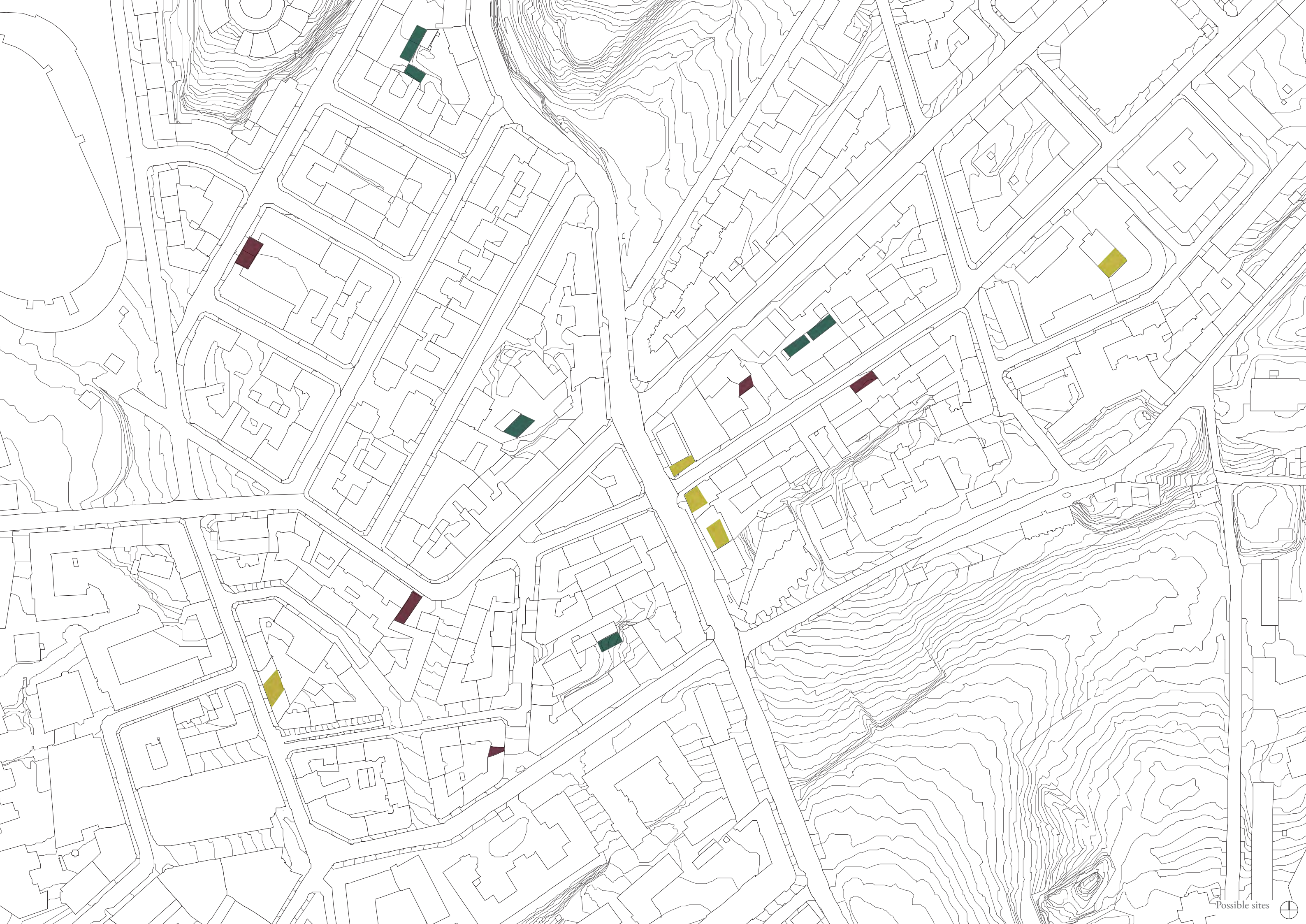


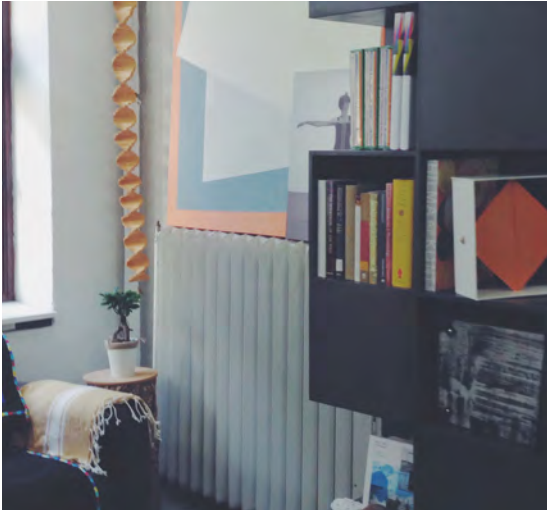
ONFILL



IN BETWEEN

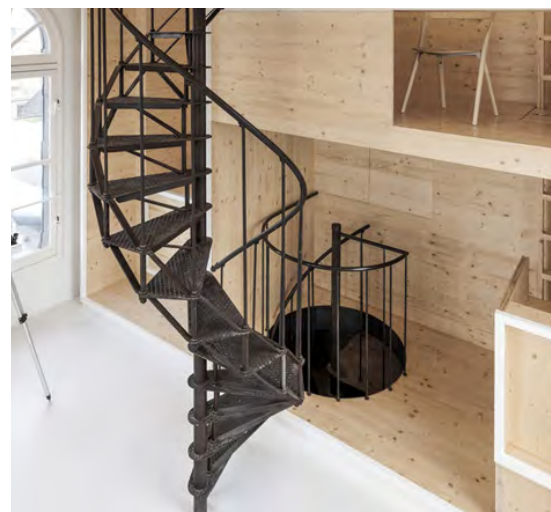
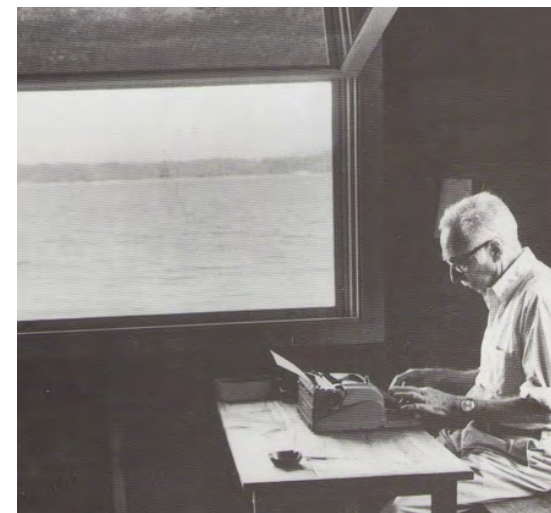






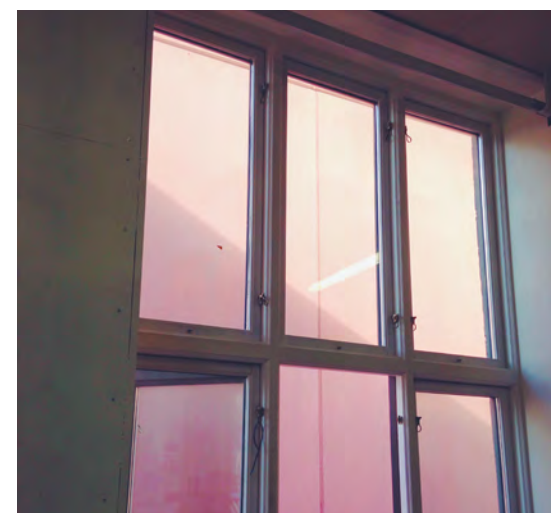
WHAT IS A GOOD WORKSPACE FOR ARTISTS

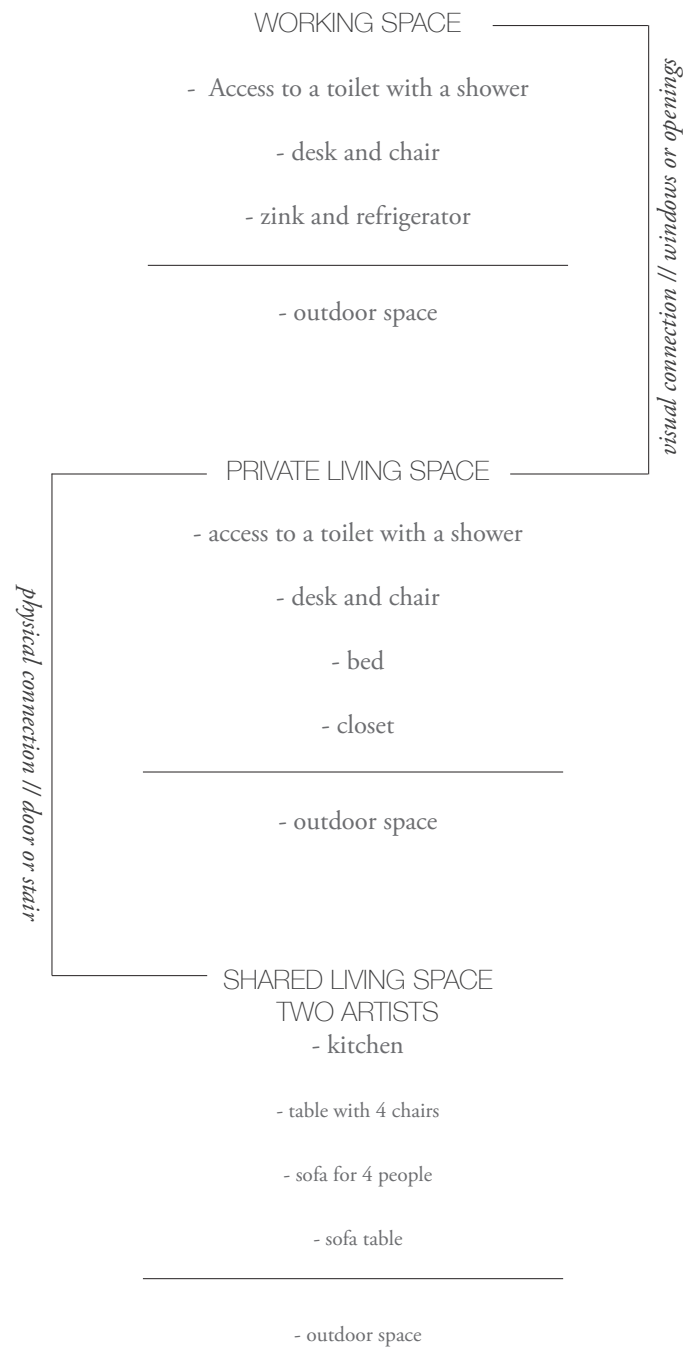
- a quiet environment
- sence of belonging
- windows
- a room with a door
- ceiling height
- aeration
- shared areas
- open rooms
- daylight
- to be able to study your art from a distance



"An artistic process is highly introverted and it's important to have the opportunity to choose when you want to be alone."

Hanne Lydia Kristoffersen, artist





REACHING

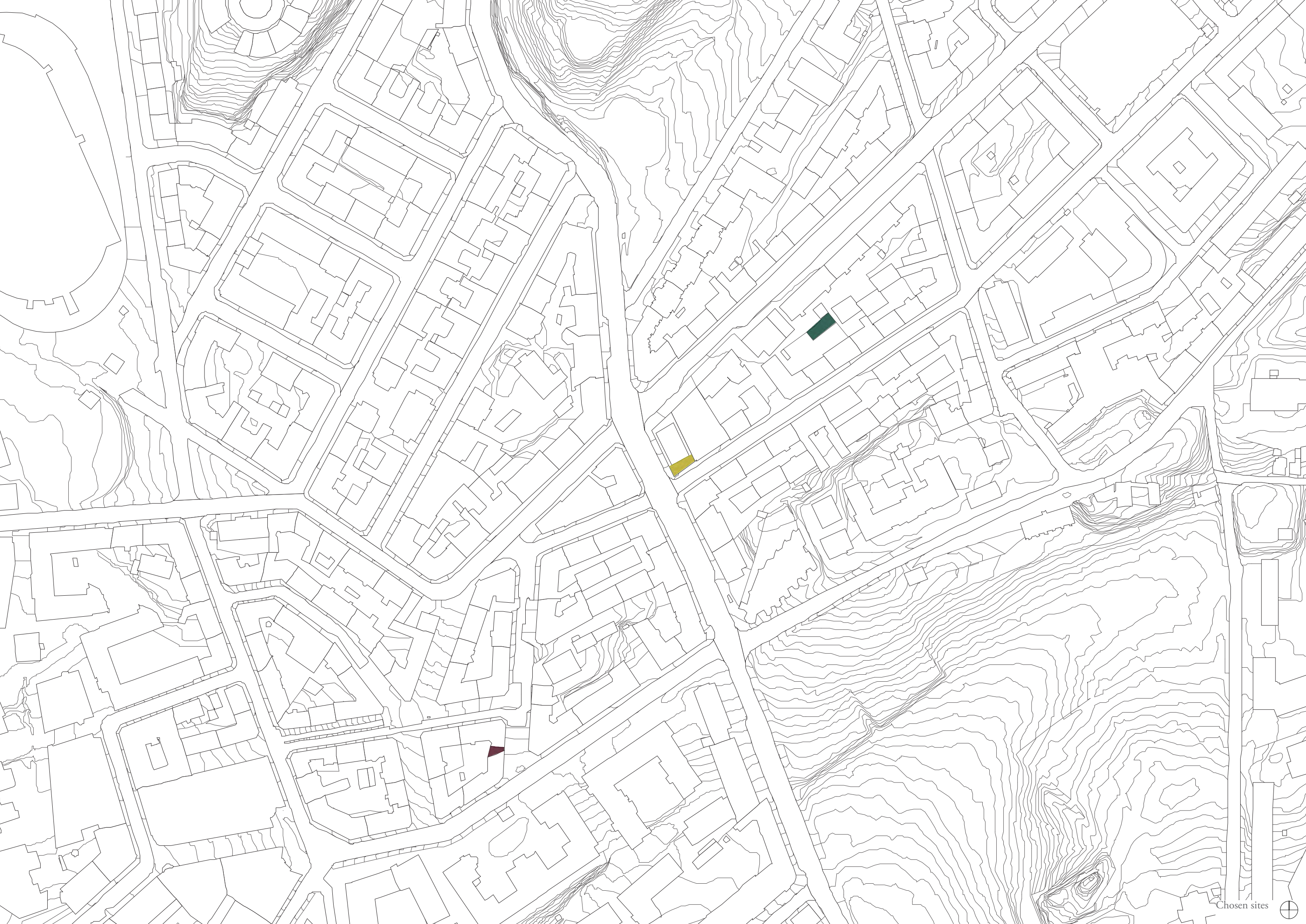
- reach out towards something /try to enhance the qualitties from the set conditions/ boundaries

ARTISTIC DISTANCE

- to be able to study your art from a physical and emotional distance

MEET THE ART

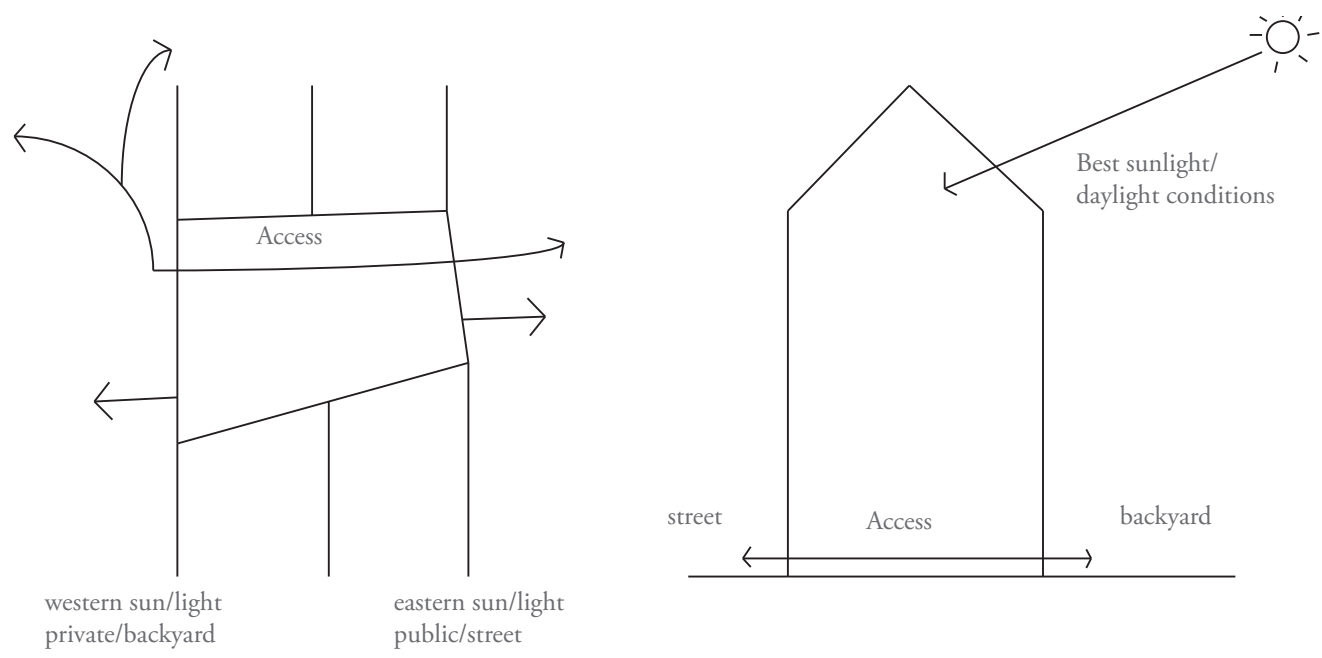
- to facilitate an artistic community where discussion, cooperation, inspitation and exploration can occur



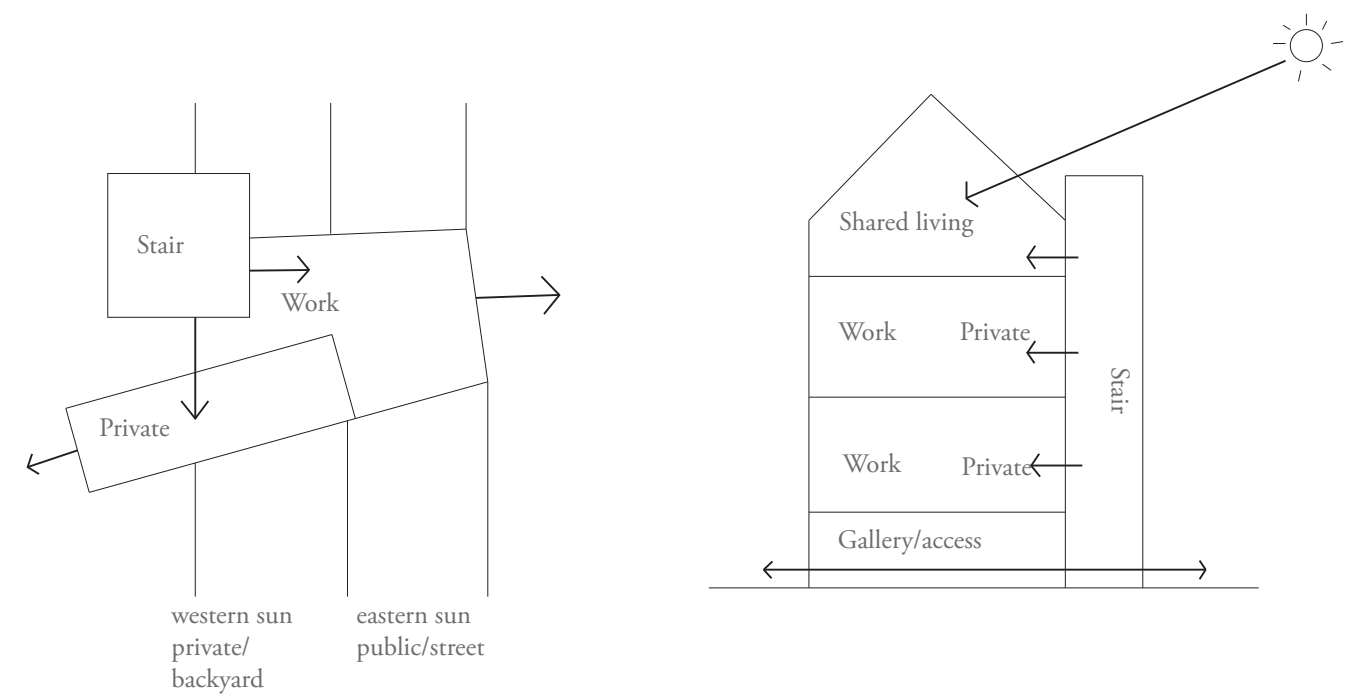
Chosen sites



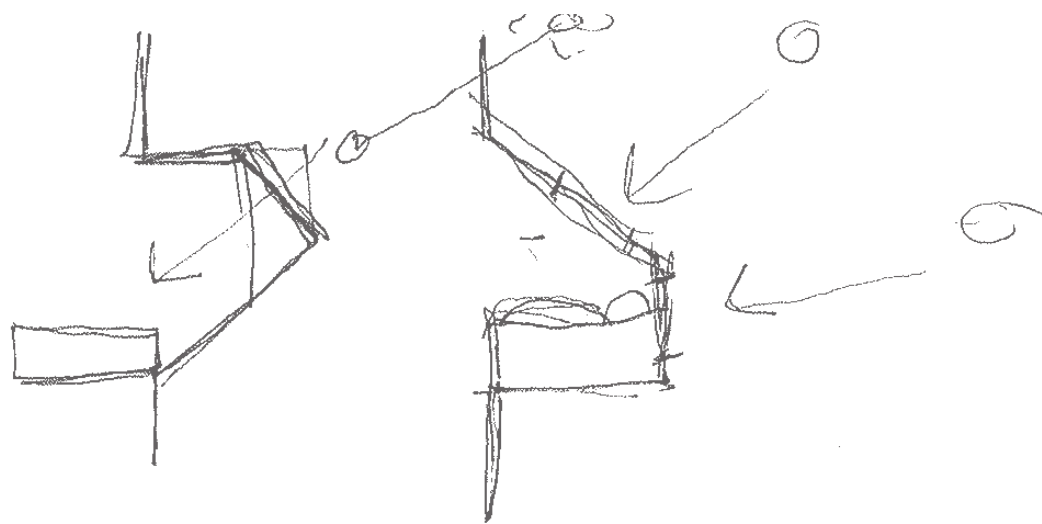
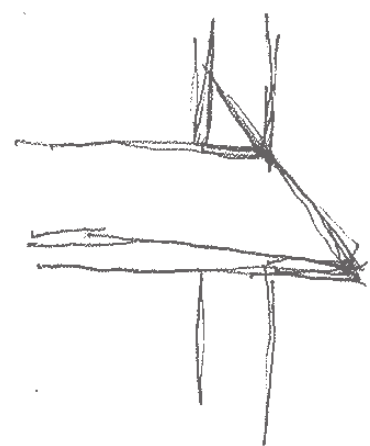


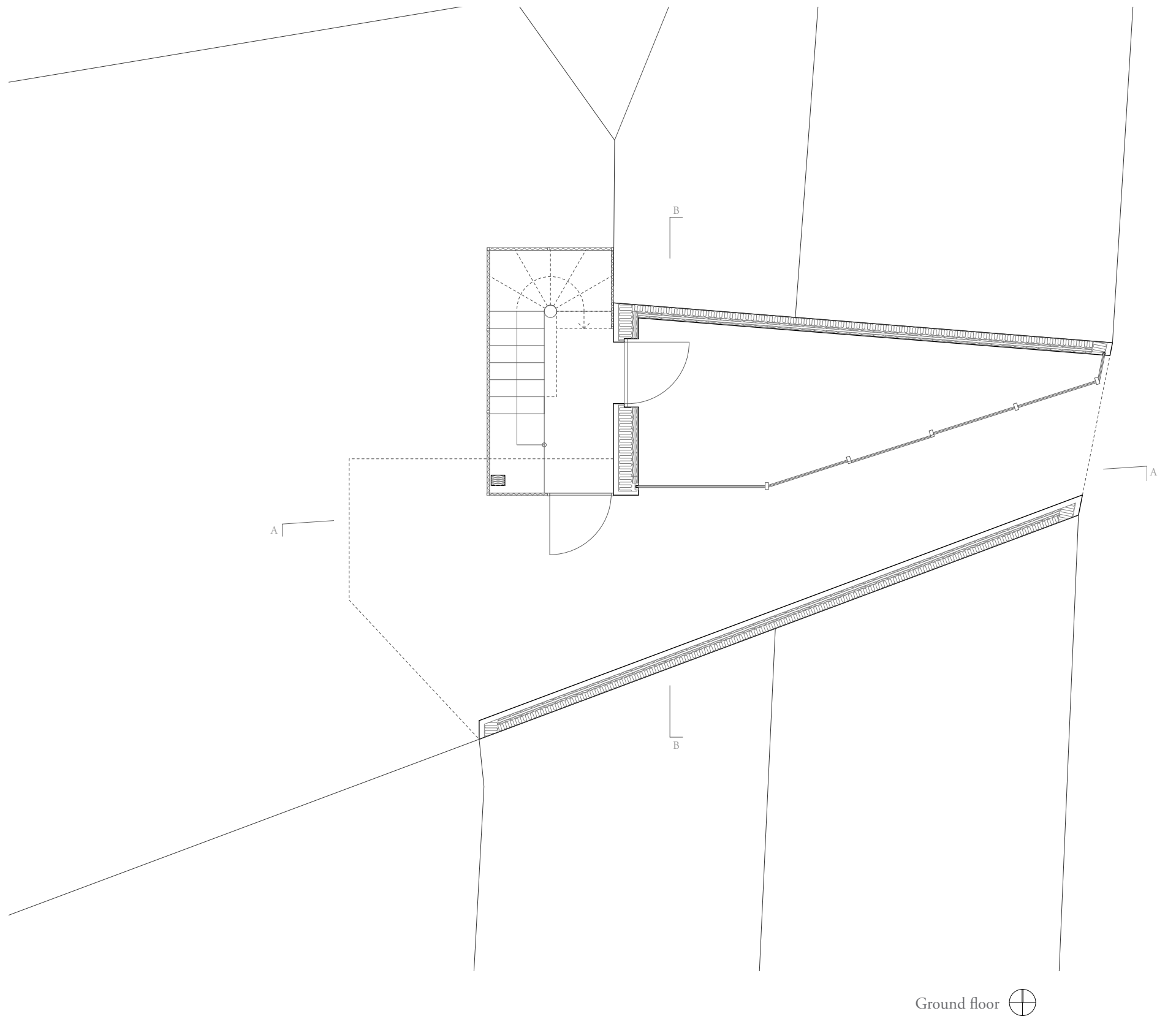
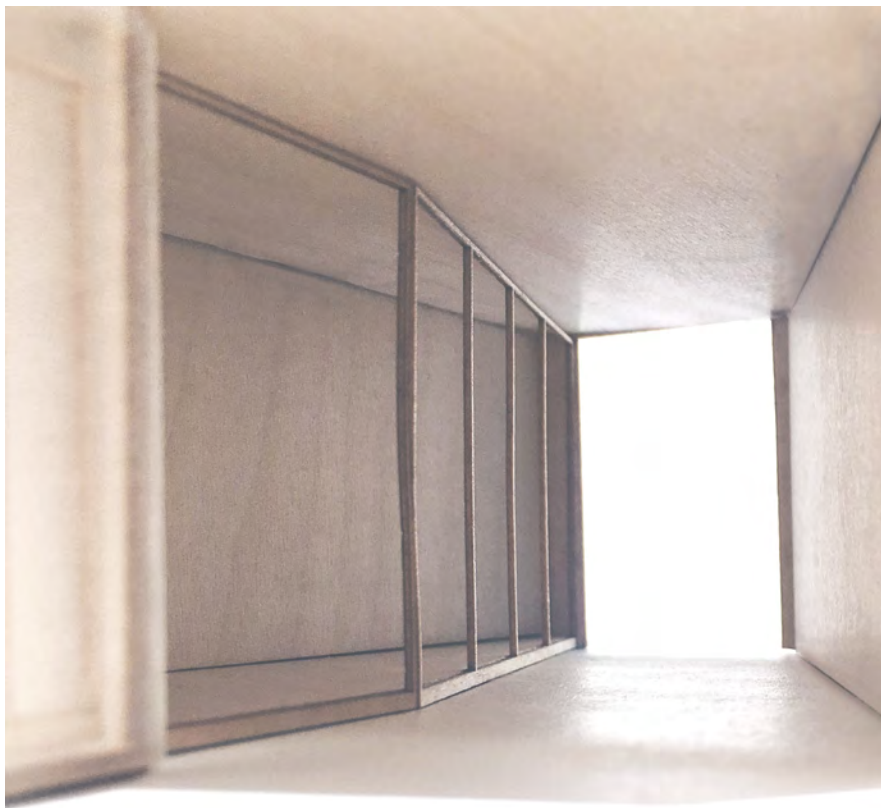


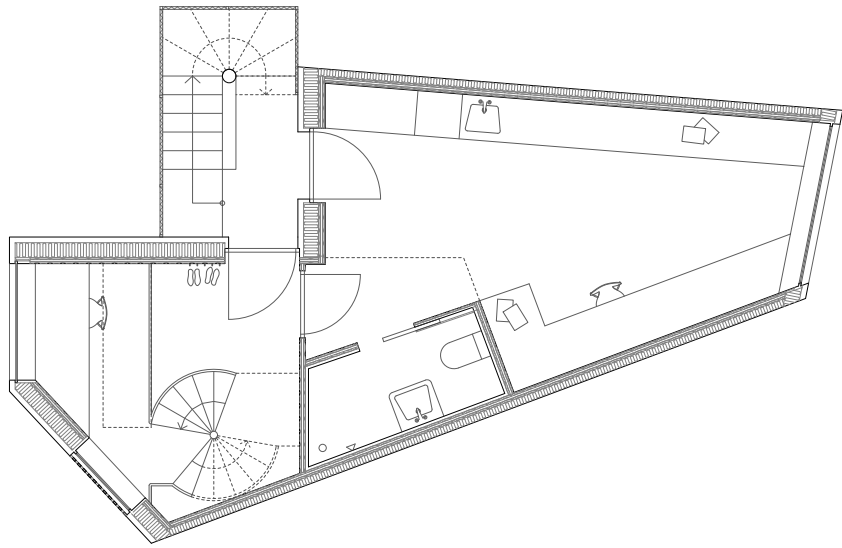
EXISTING SITUATION



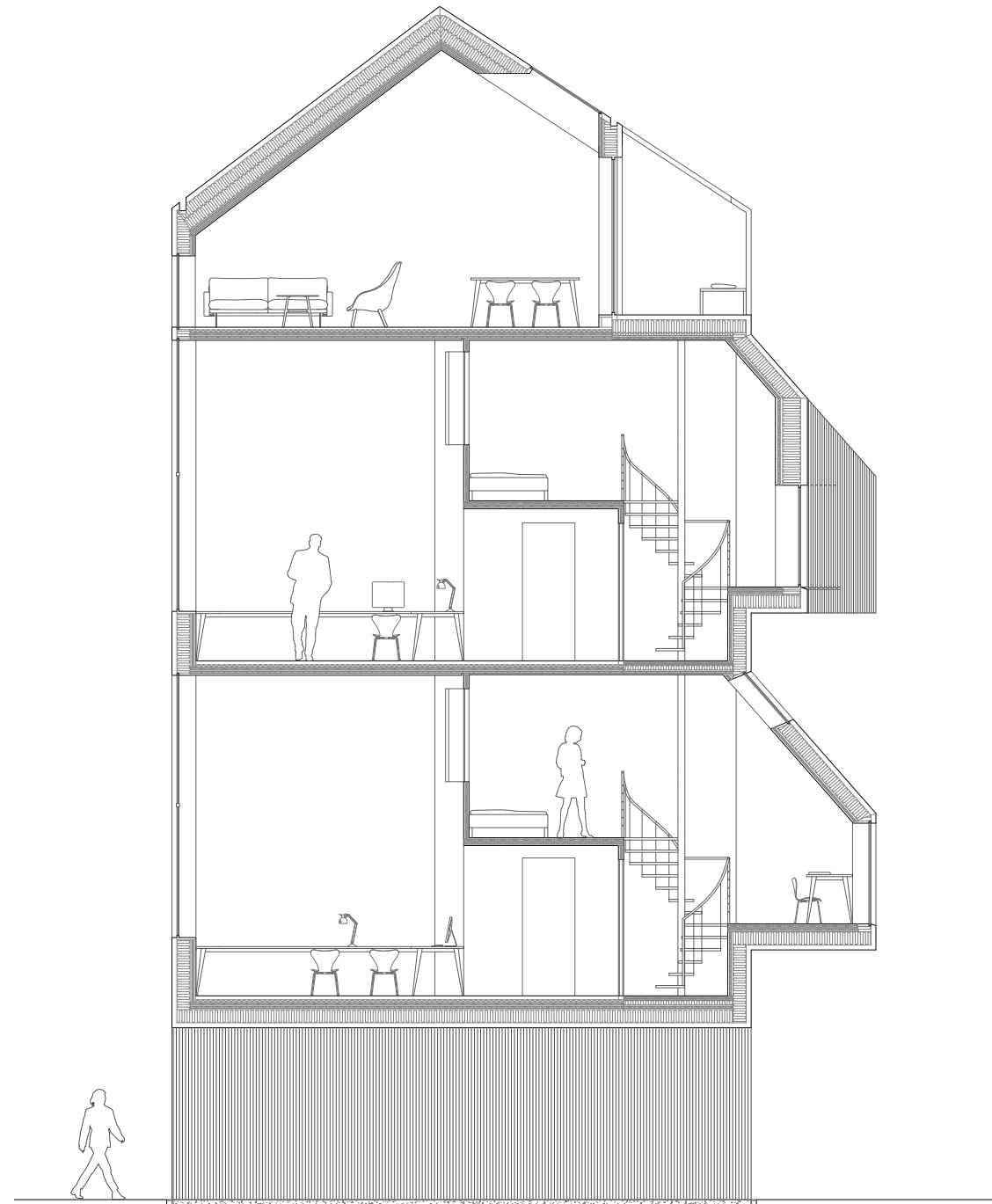
APPROACH



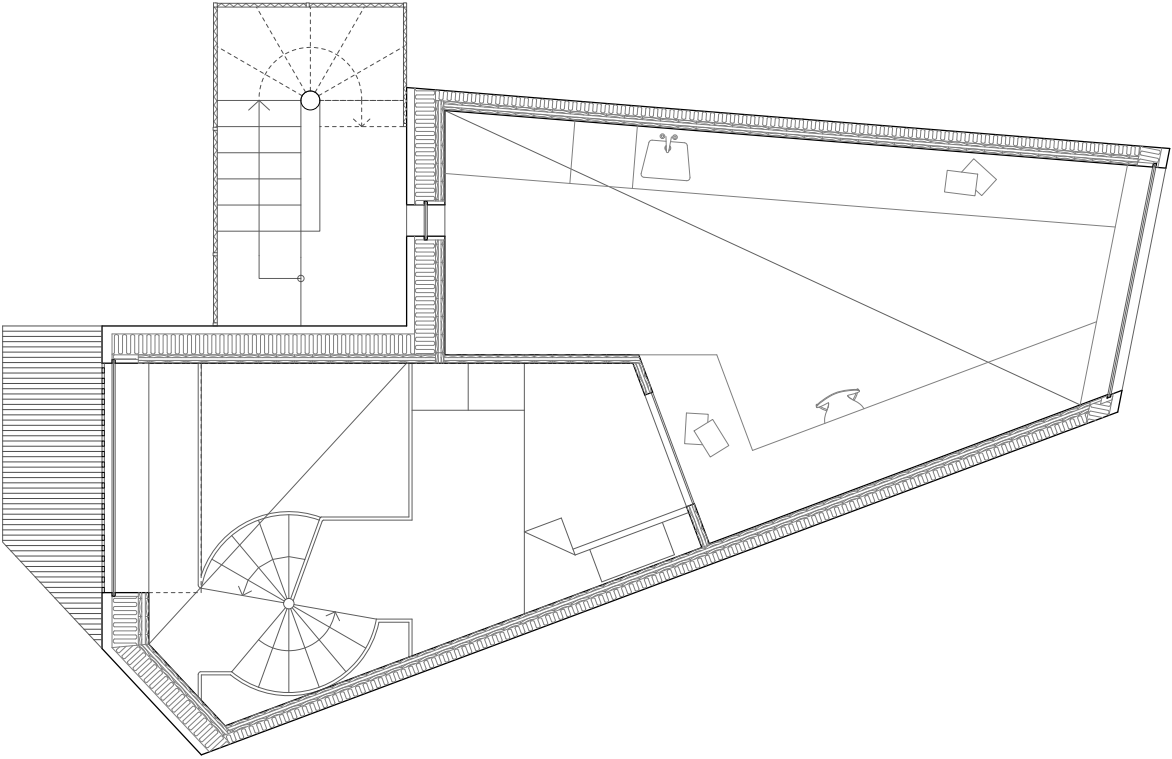




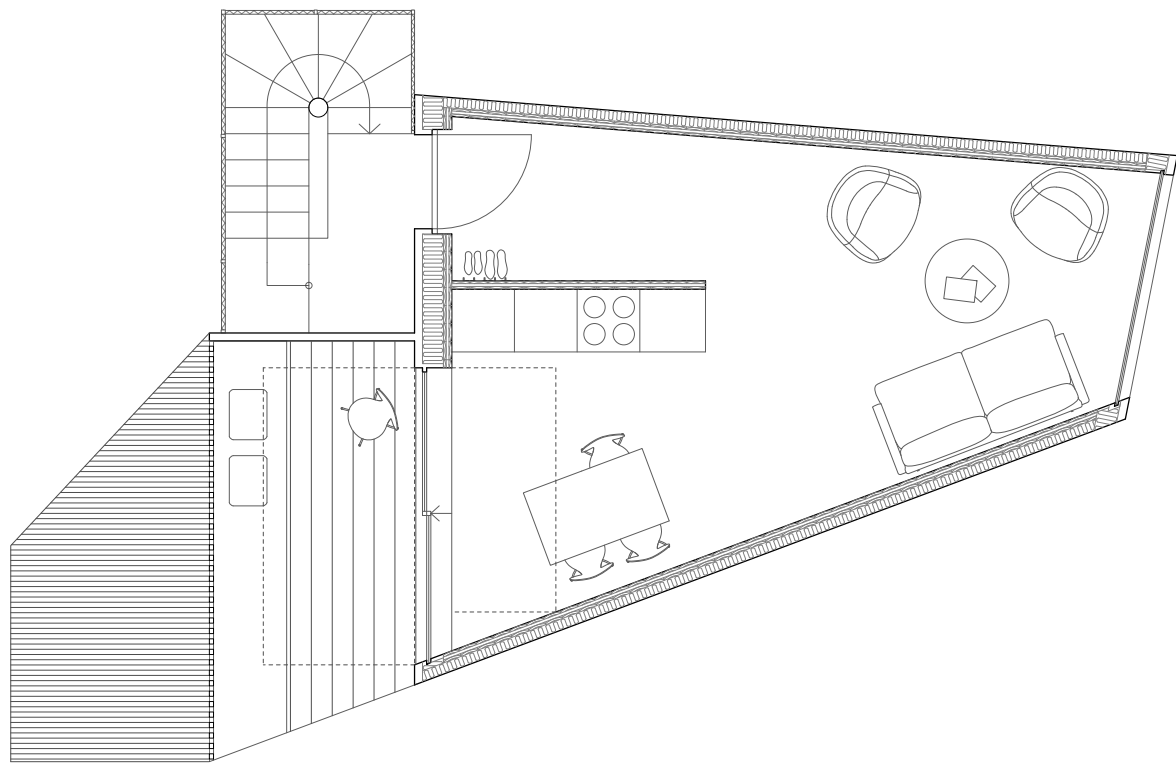
First level 



Section AA



Second level ⊕



Top floor

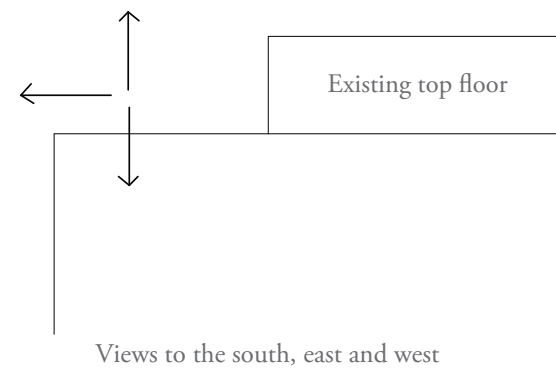
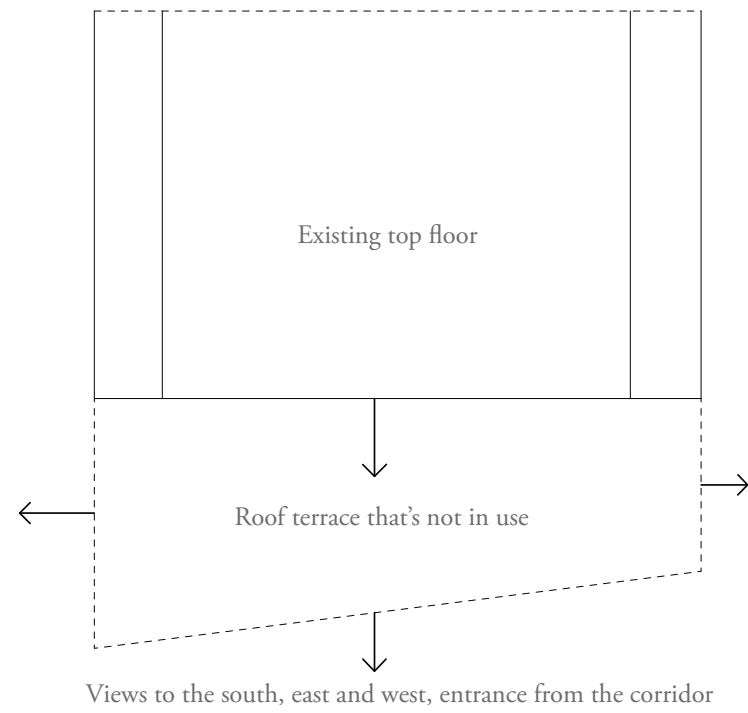




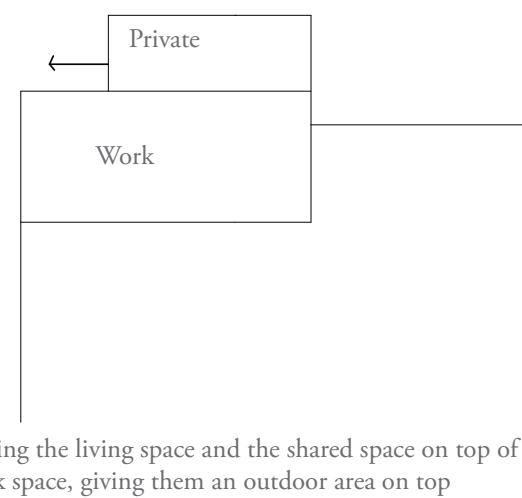
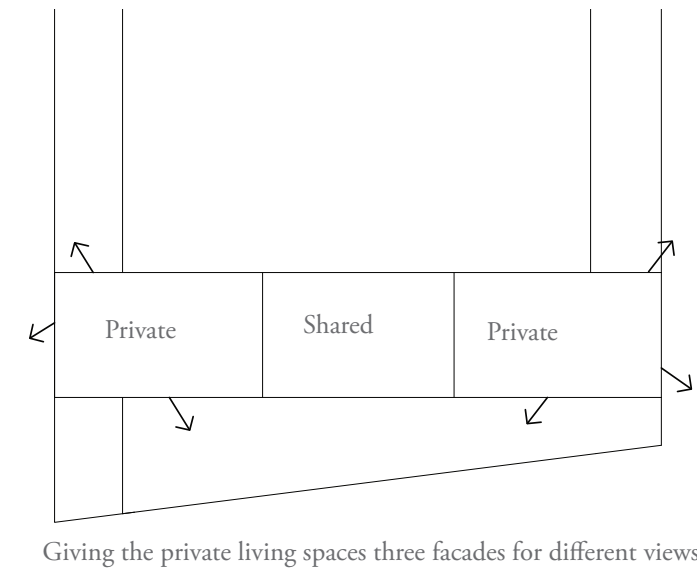
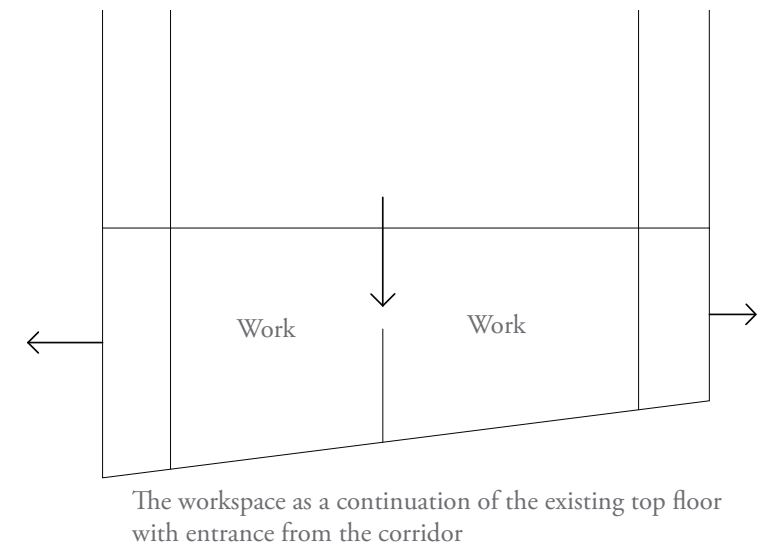
Elevation east



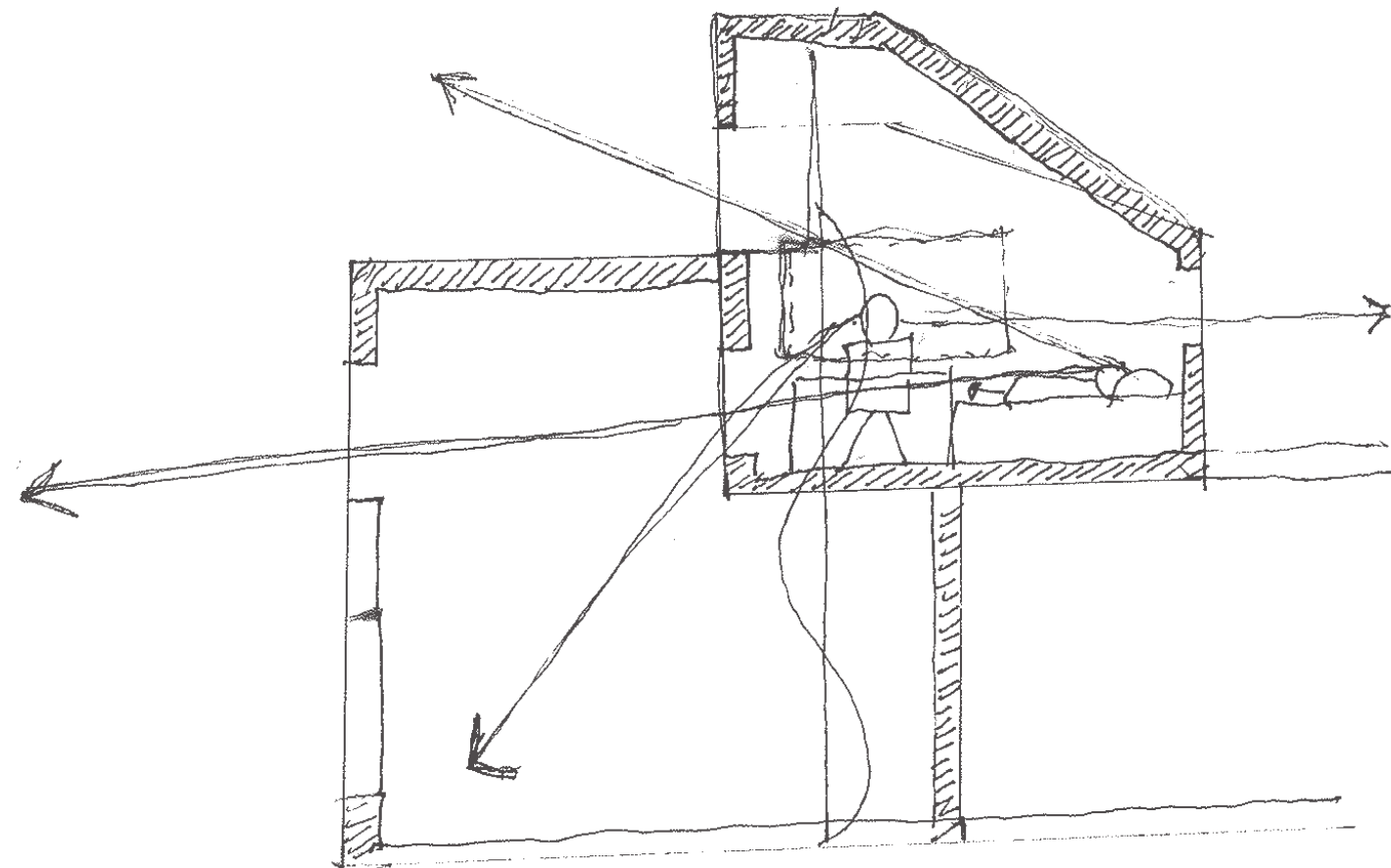
Elevation west

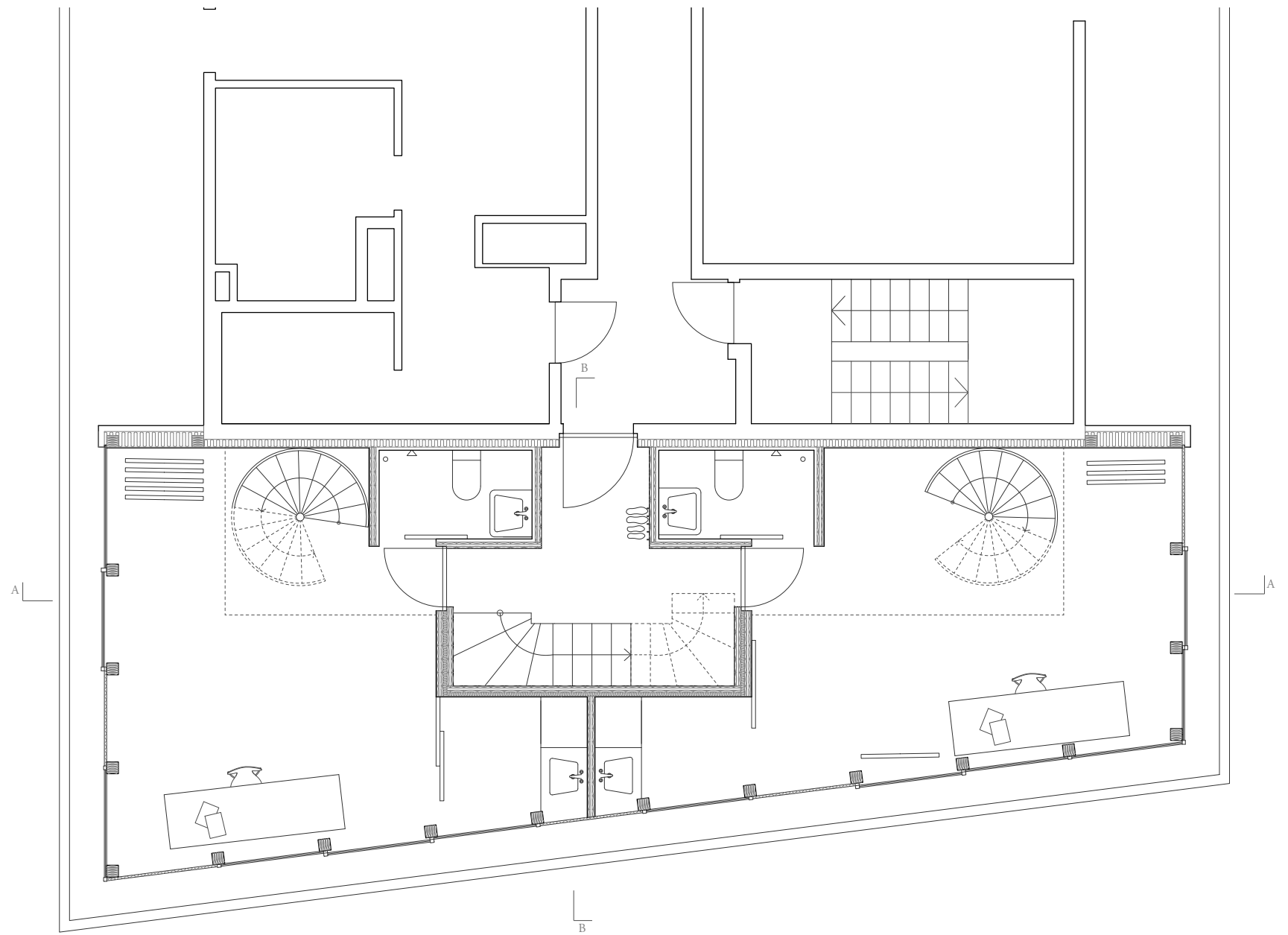



EXISTING SITUATION

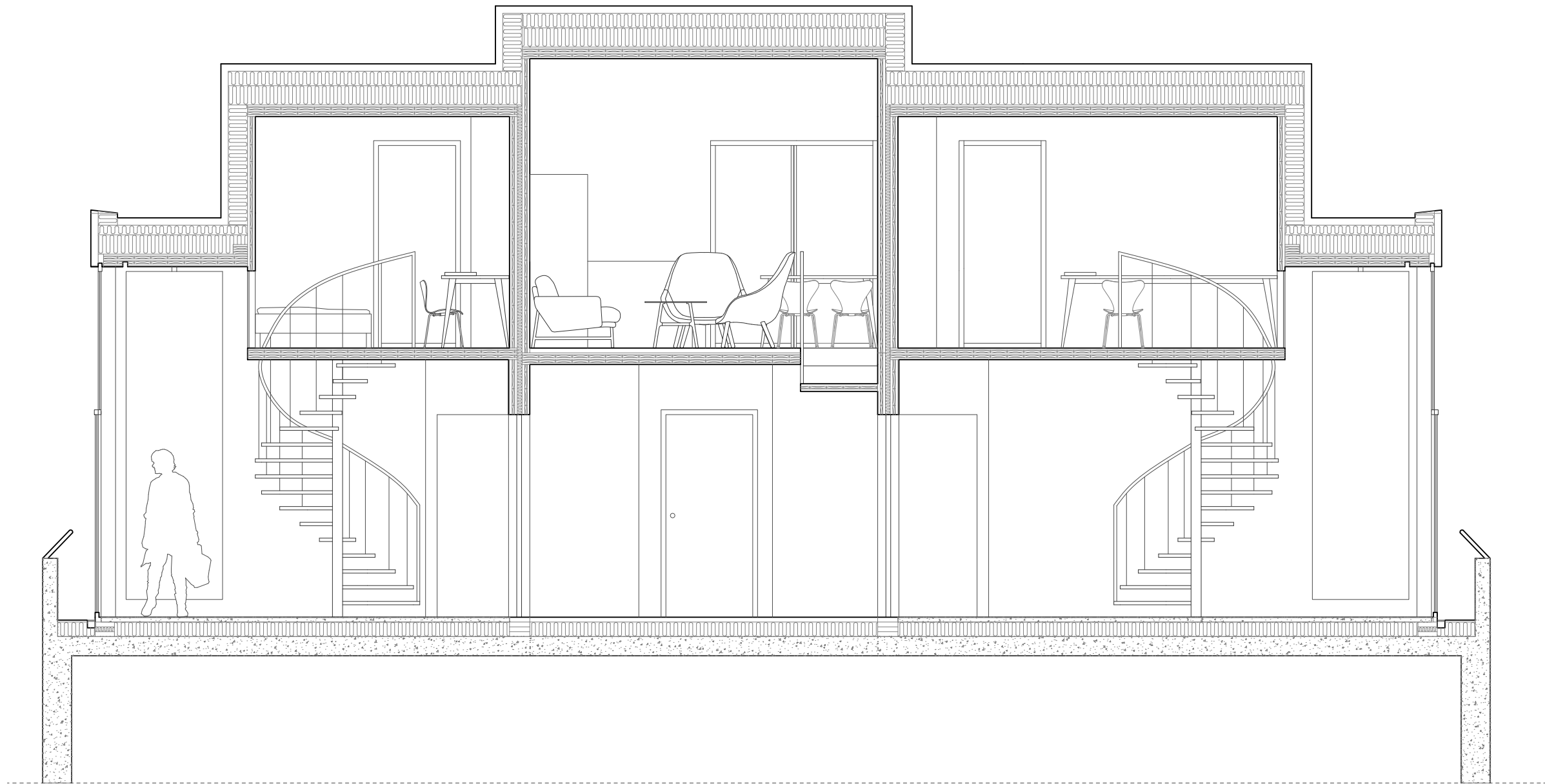


APPROACH

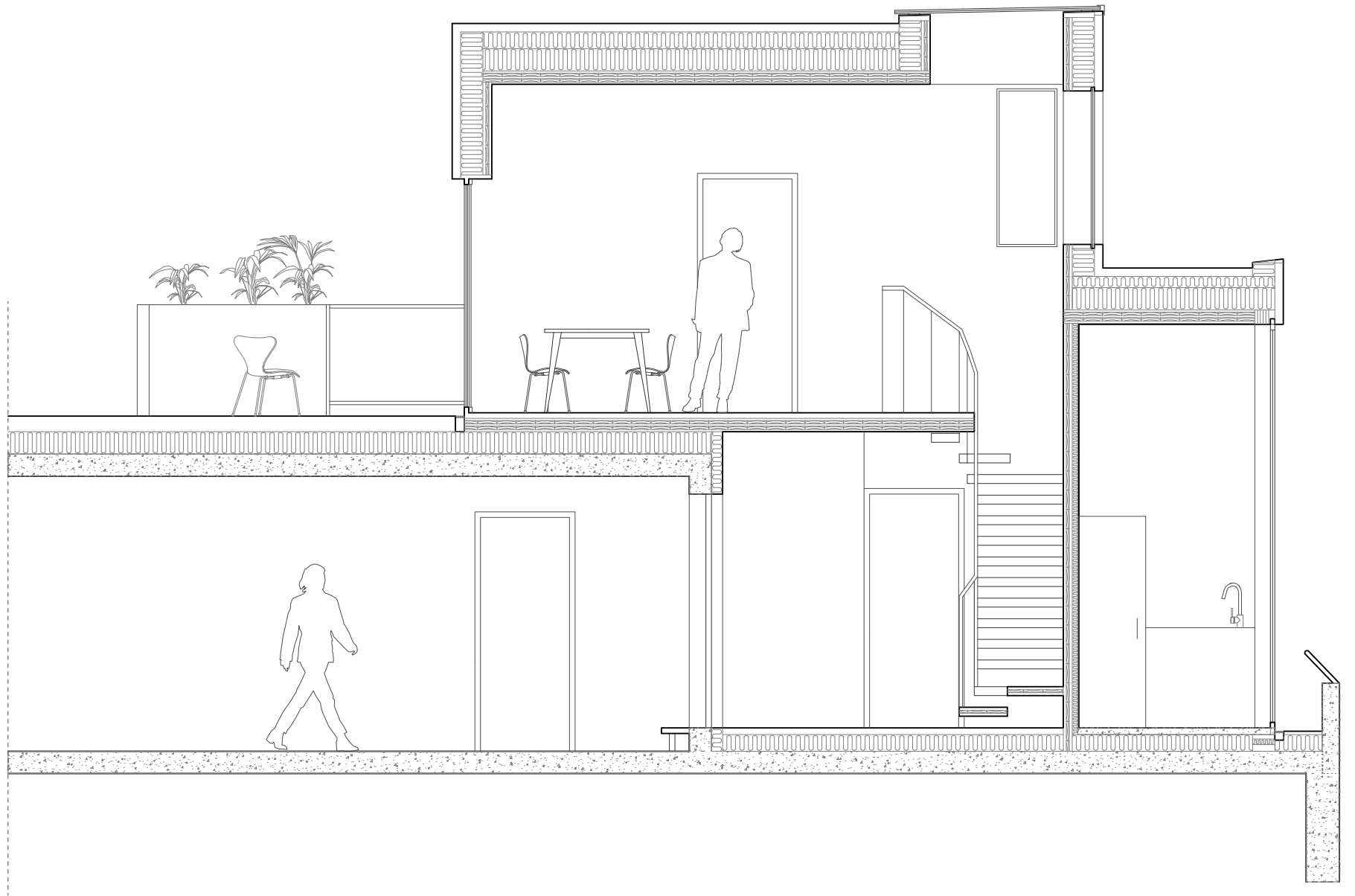




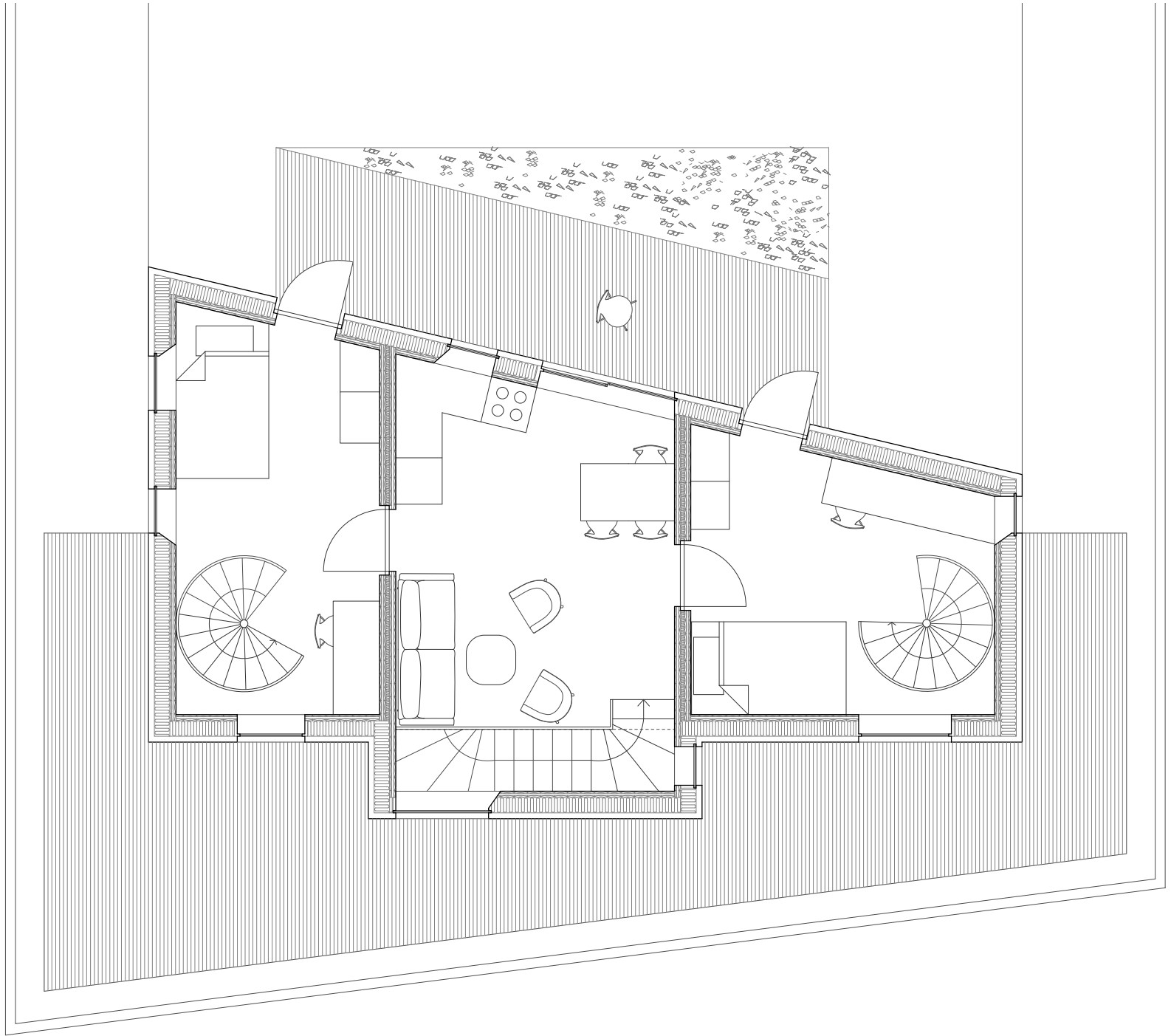
1st floor (+29 m above the street level) 



Section AA



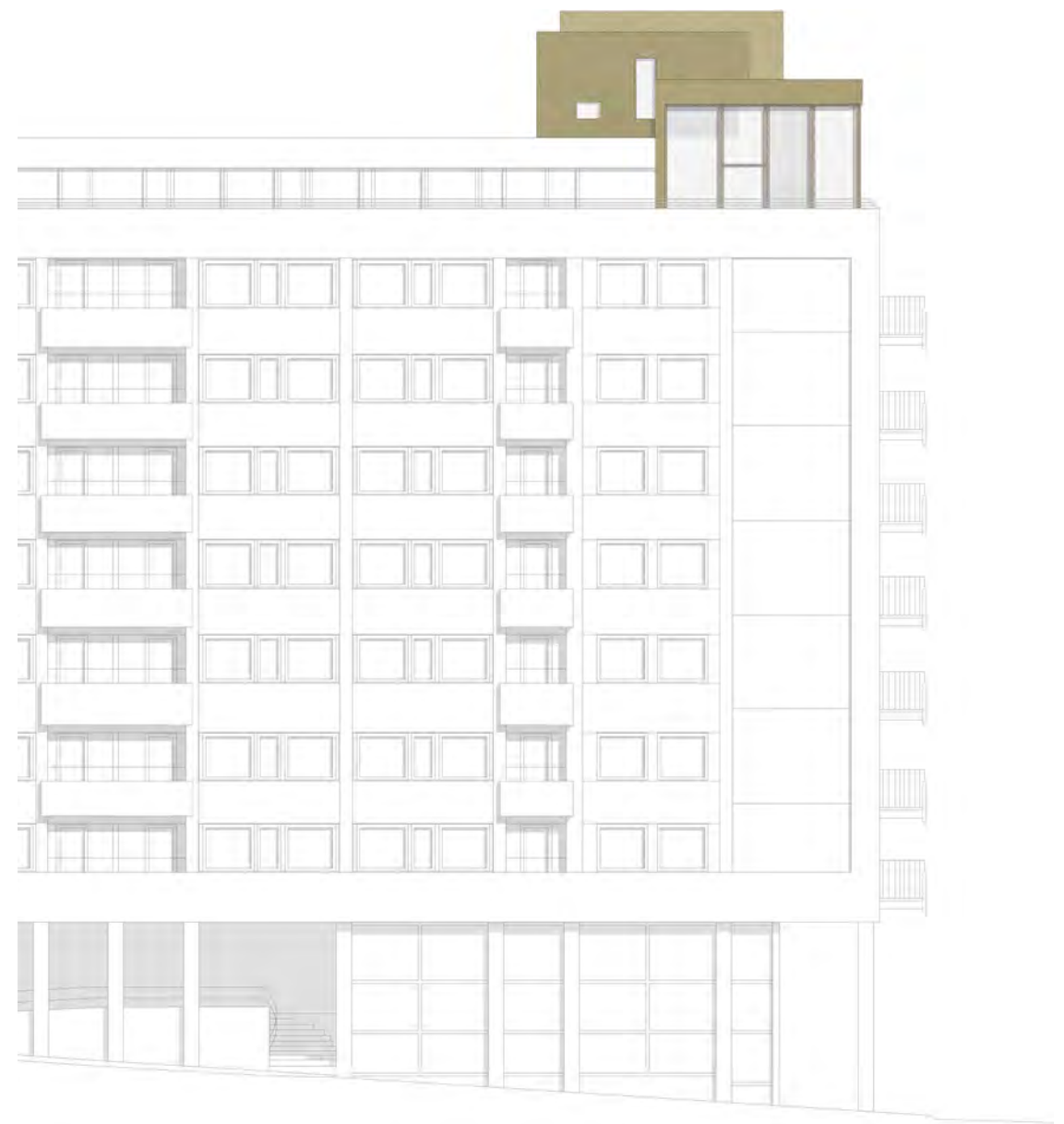
Section BB



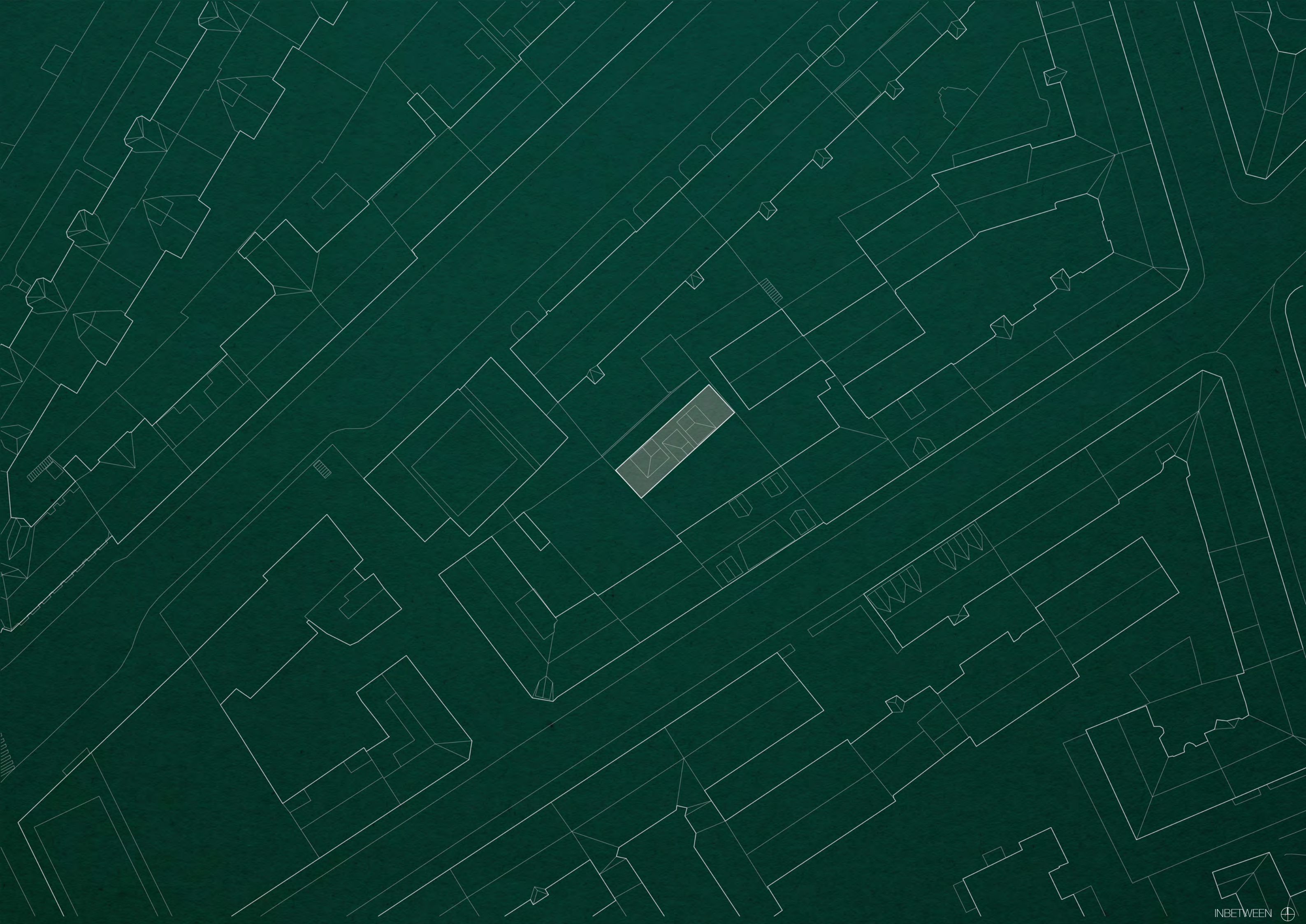
2nd floor (+32 m above the street level)

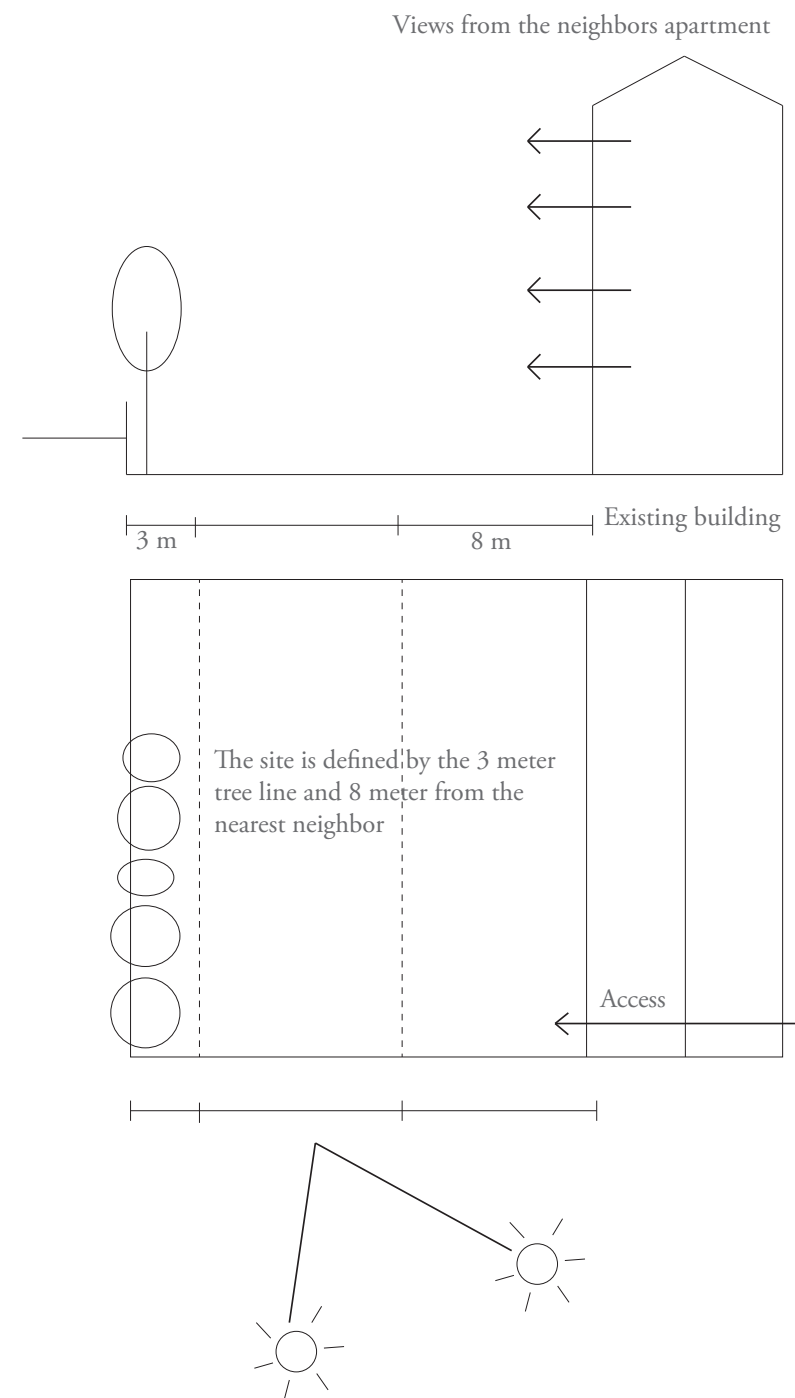


Elevation south

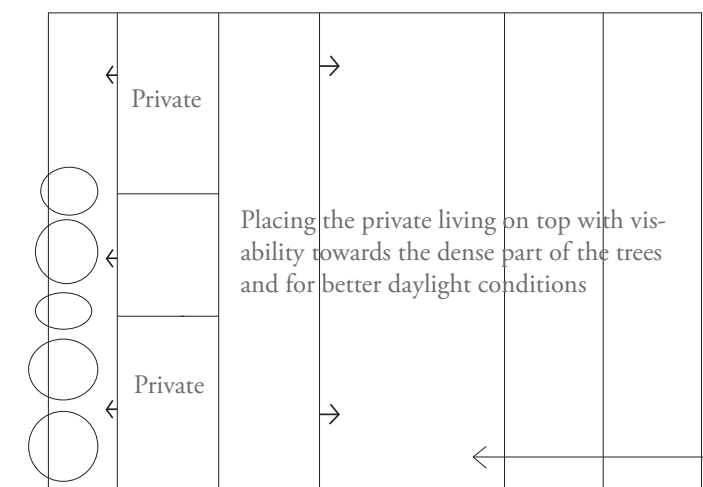
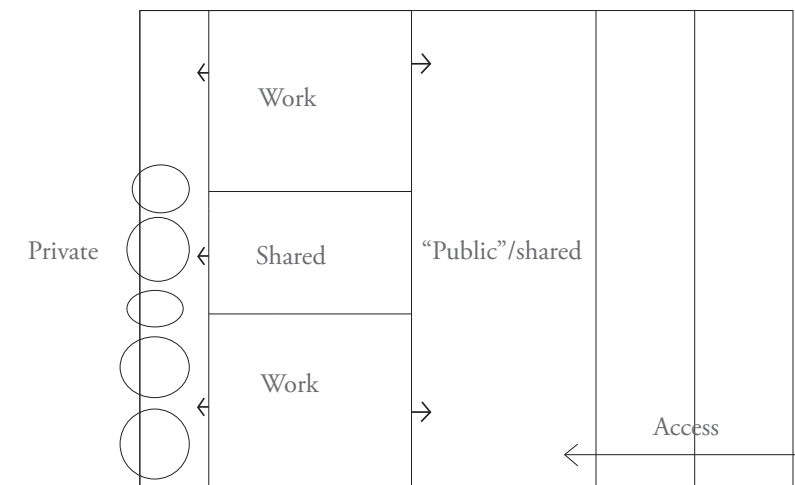
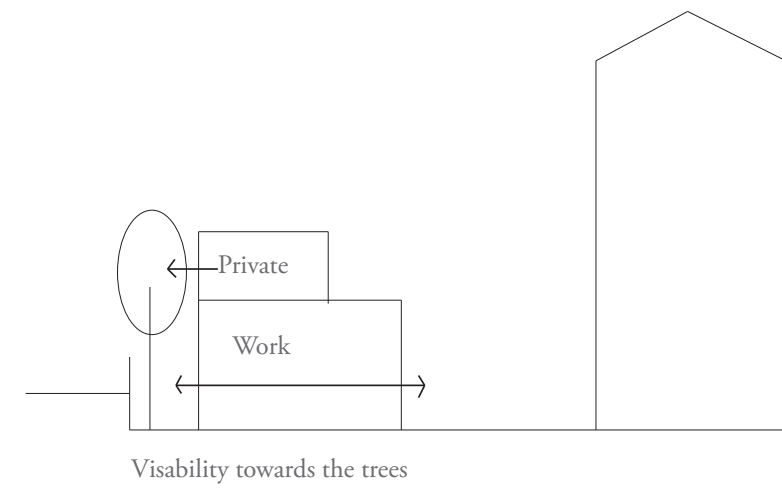


Elevation west

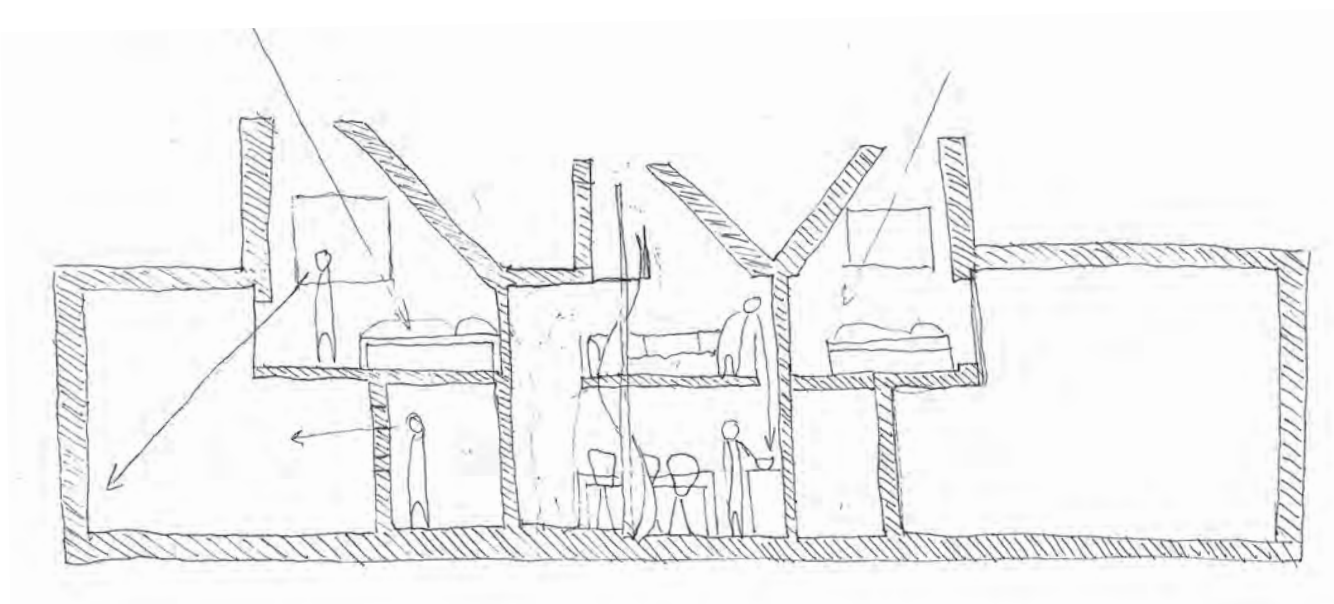
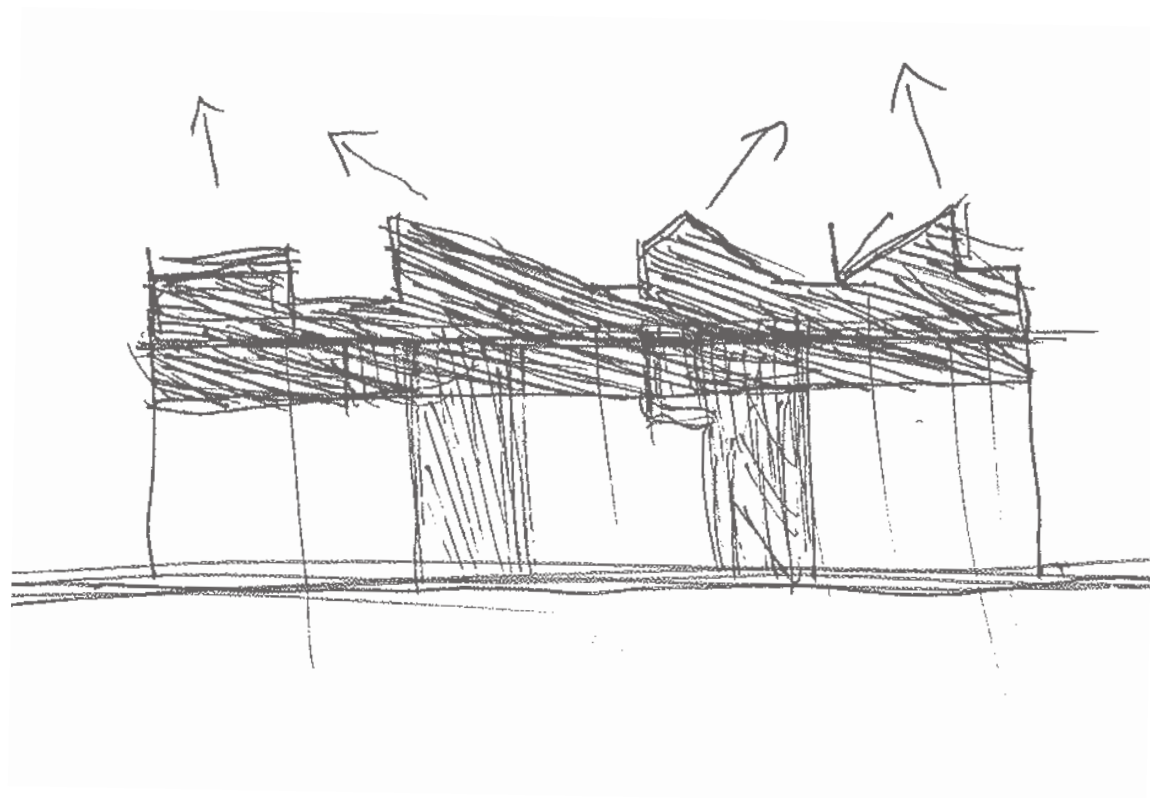


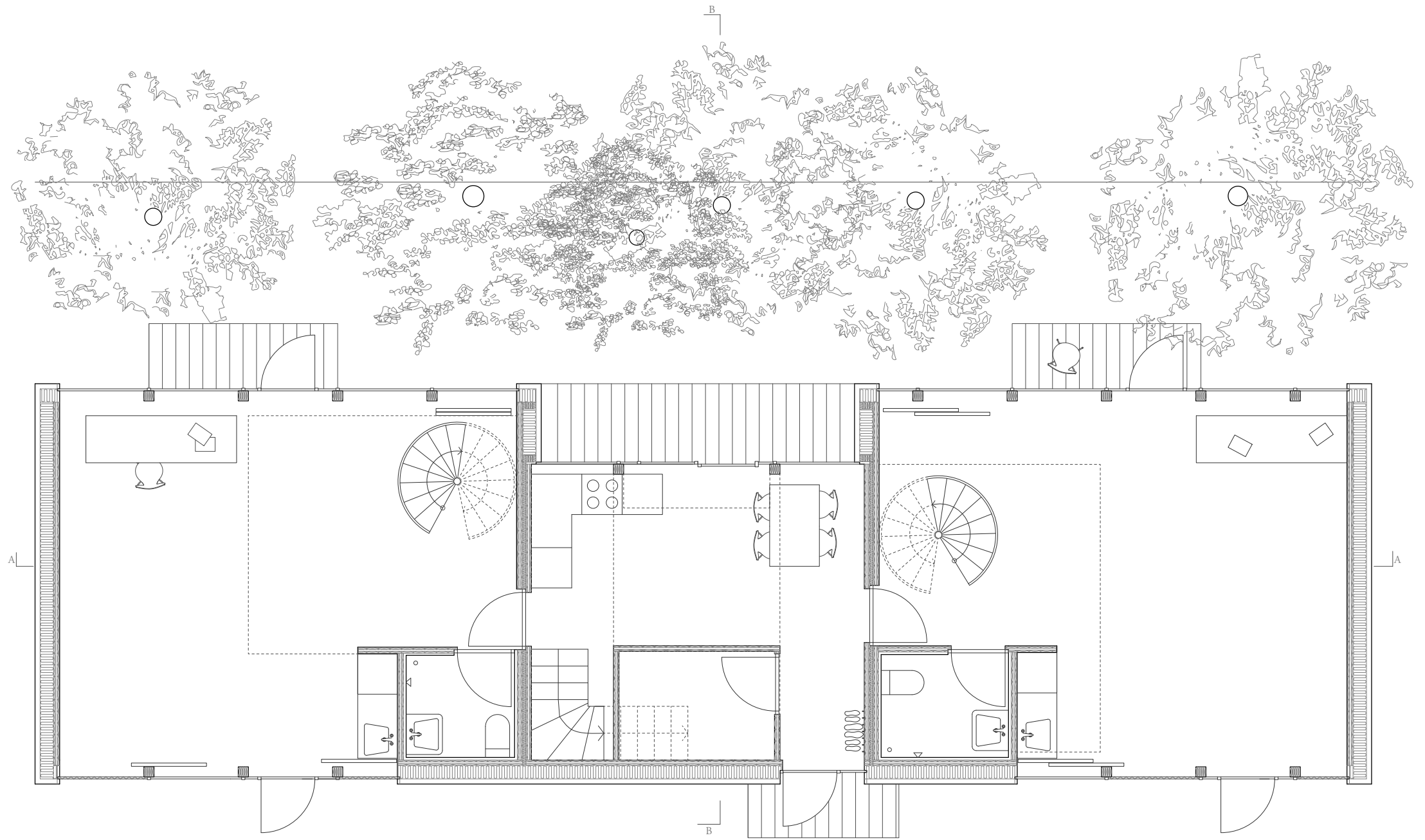
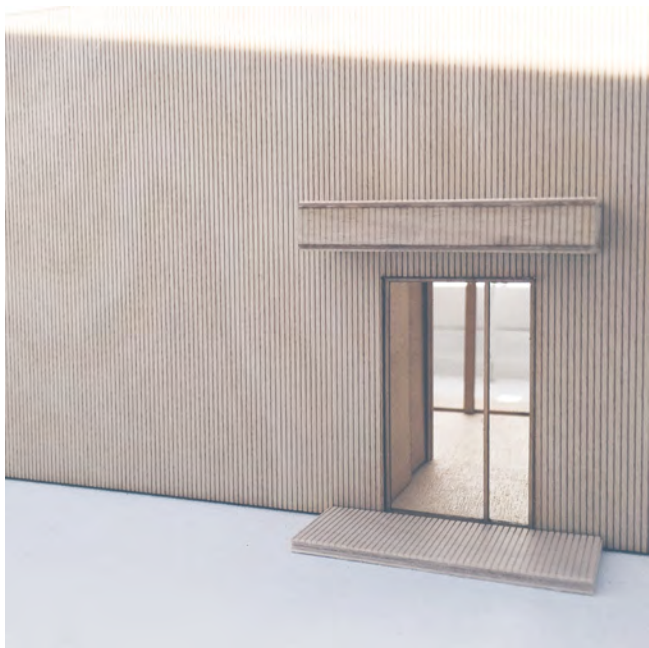


EXISTING SITUATION

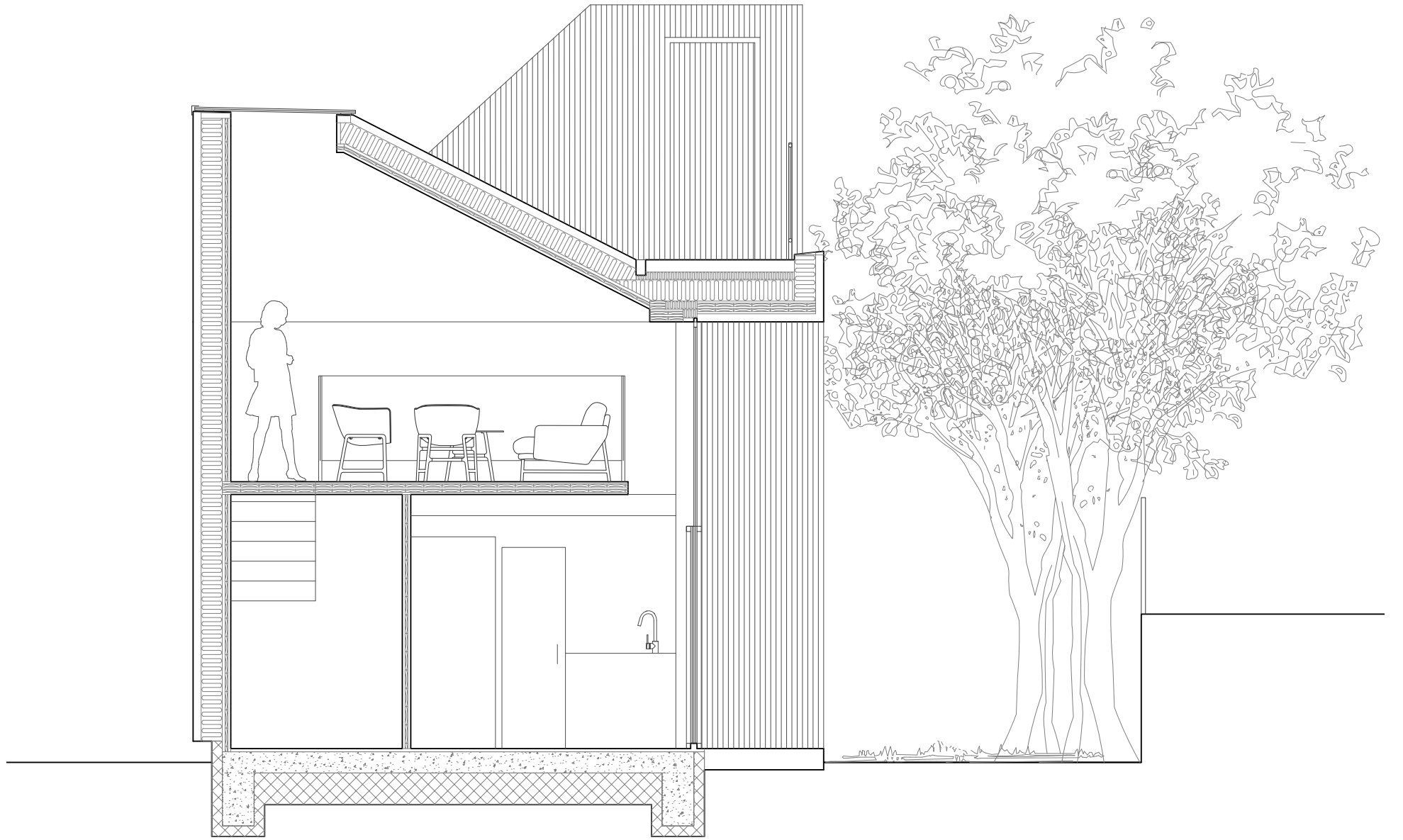


APPROACH

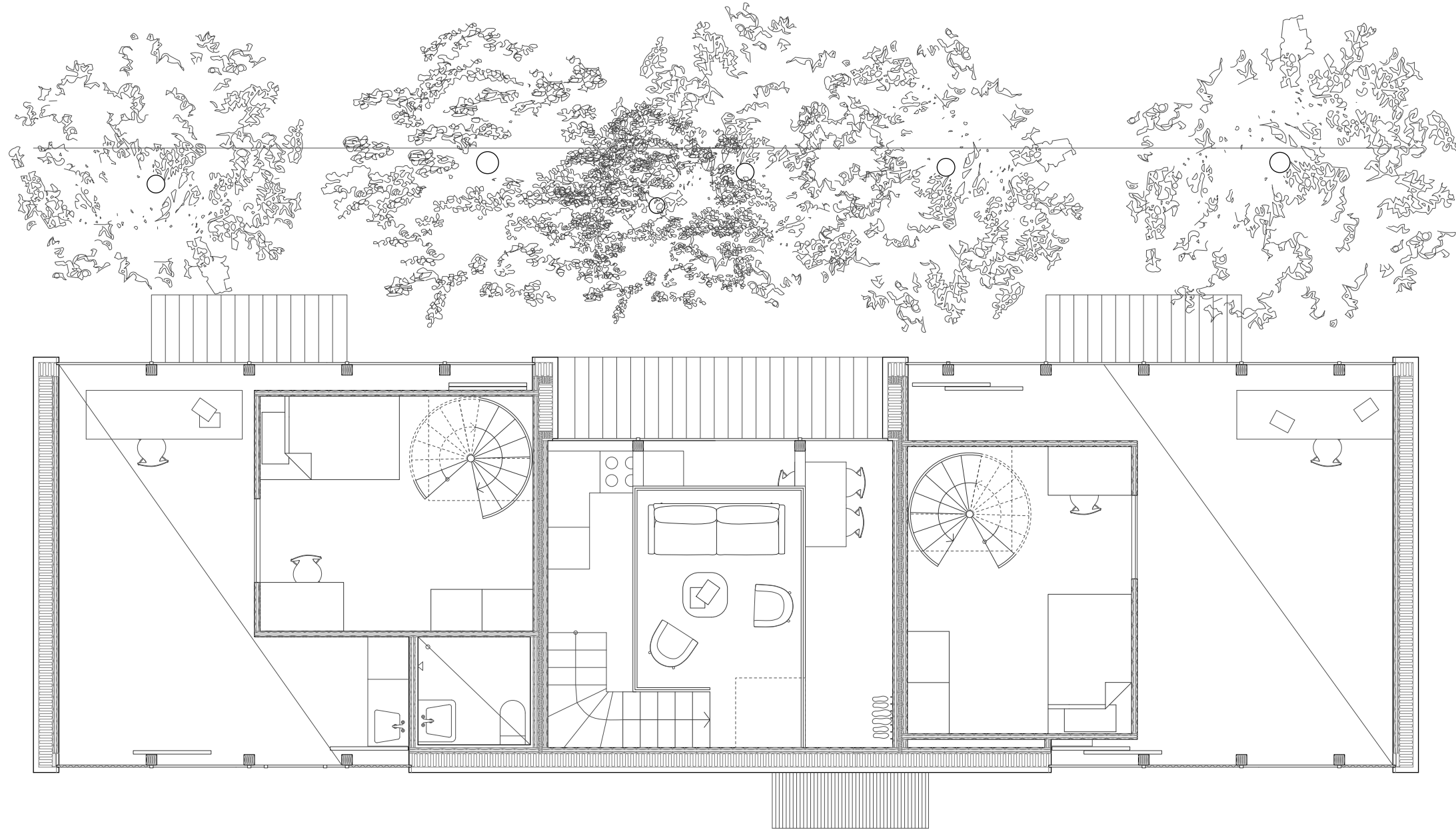




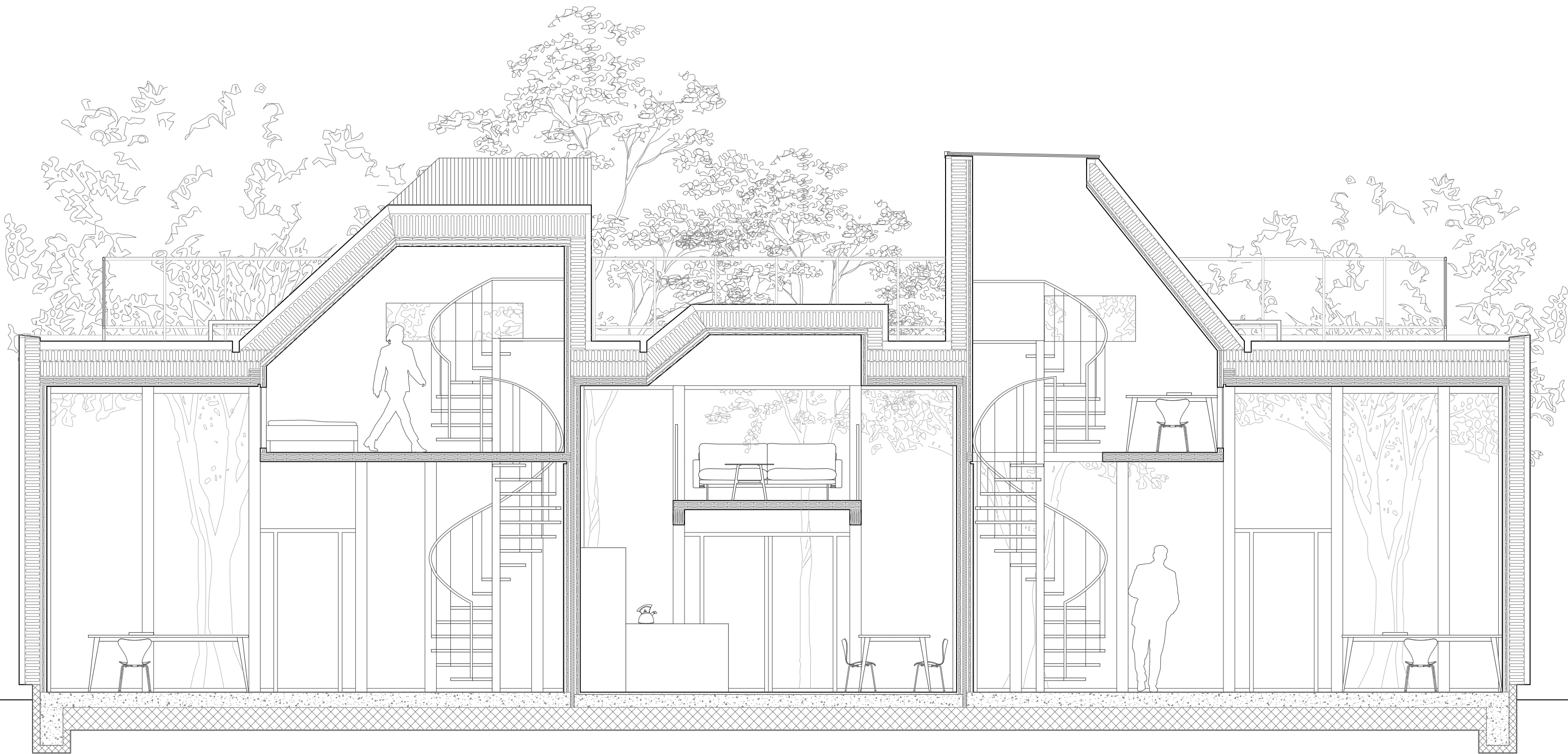
Ground floor 



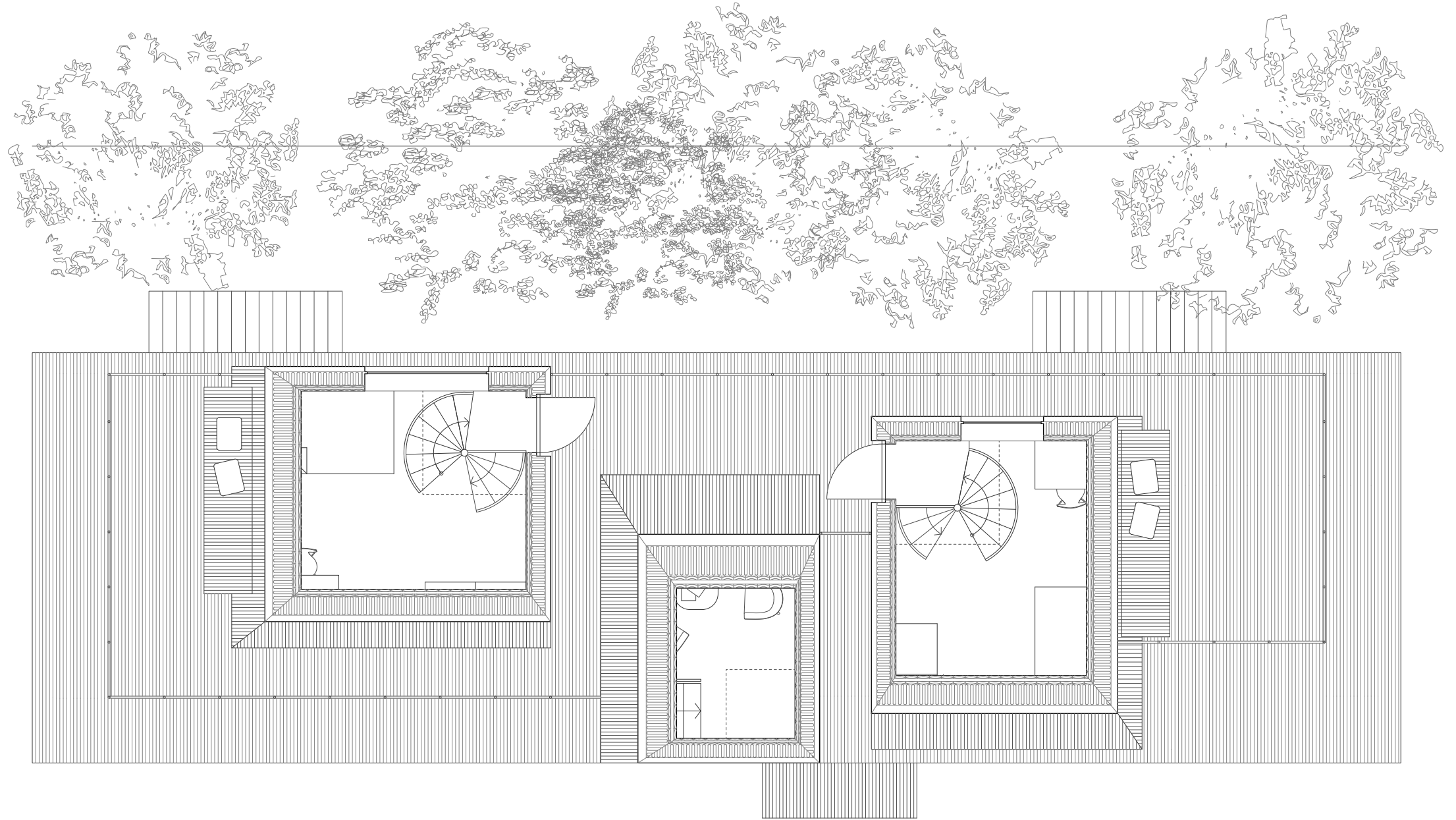
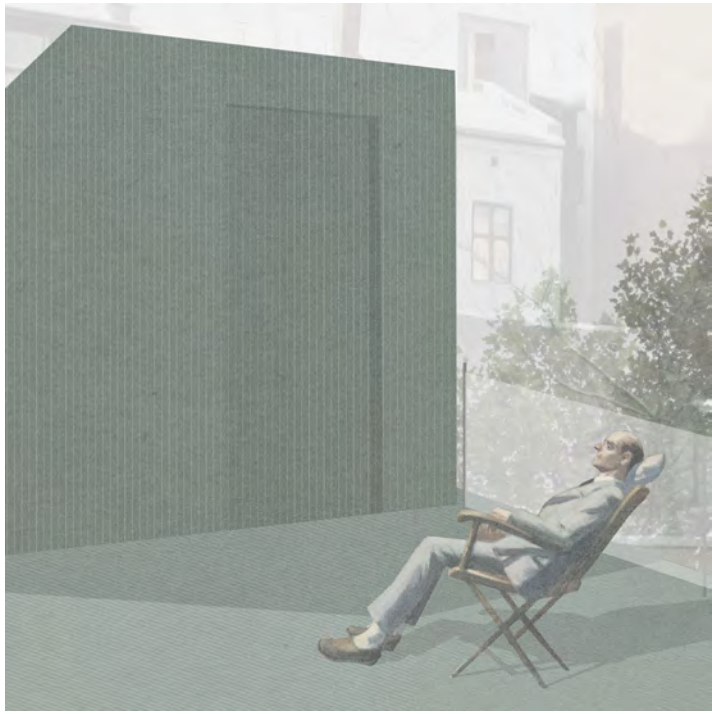
Section BB



2nd floor 



Section AA



Roof top 



Elevation south



Elevation north

